

GC Series Air Source Unit (3 or 2 Combination)

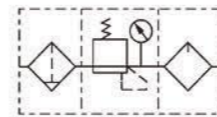


Ordering Code

Code	Series	Port Size	Drain	Pressure Gauge	Scale	Filter Accuracy	Thread
GC: 3 Combination	200 Series	06 : PT 1/8	Blank: Semi-auto drain	F: Square type	1: MPa	Blank: 40 μ	Blank: PT
GFC: 2 Combination	300 Series	08 : PT 1/4	M: Manual drain	C: Traditional type	2: Psi	W: 5 μ	G: PS
GFR: Filter-regulator combination	400 Series	10 : PT 3/8 15 : PT 1/2	A: Auto drain				T: NPT
GF: Filter							
GR: Regulator							
GL: Lubricator							

*Note: No Auto Drain type is available on GC 200 Series.
**Note: Max. adjustable pressure is at 0.4 MPa on Low pressure type.

Symbol



Specification

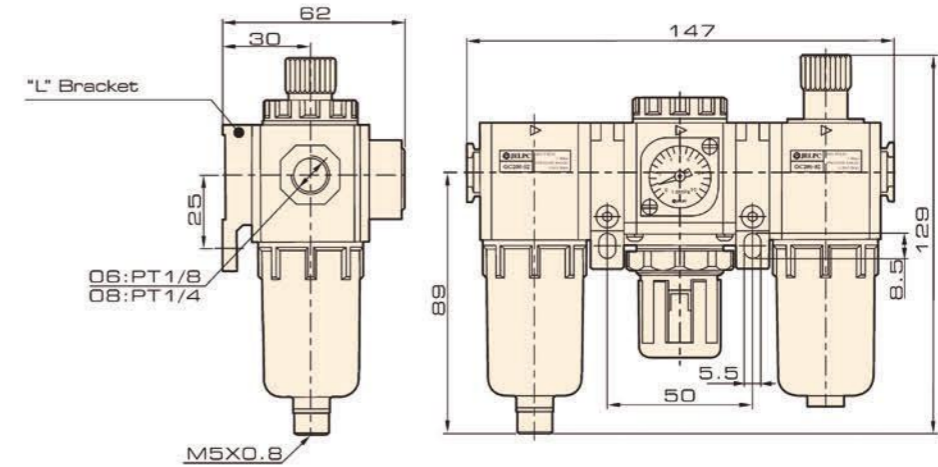
Model	GC200-06	GC200-08	GC300-08	GC300-10	GC300-15	GC400-10	GC400-15	
Working medium	Air							
Port Size	PT1/8	PT1/4	PT1/4	PT3/8	PT1/2	PT3/8	PT1/2	
Filtration	40 μ or 5 μ							
Adjustable pressure range	0.15 ~ 0.9 MPa							
Maximum working pressure	1.0 MPa							
Proof Pressure	1.5 MPa							
Operating Temperature Range	5 ~ 60 °C							
Capacity of Filter Cup	10 CC		40 CC			80 CC		
Capacity of Oil Cup	25 CC		75 CC			160 CC		
Recommended Lubrication	ISO VG 32 or Same Grade							
Weight	580 g		1300 g			2358 g		
Components	Filter	GF 200-06	GF 200-08	GF 300-08	GF 300-10	GF 300-15	GF 400-10	GF 400-15
	Regulator	GR 200-06	GR 200-08	GR 300-08	GR 300-10	GR 300-15	GR 400-10	GR 400-15
	Lubricator	GL 200-06	GL 200-08	GL 300-08	GL 300-10	GL 300-15	GL 400-10	GL 400-15

GC Series Air Source Unit (3 or 2 Combination)

FRL	FRL
AC, BC	AC, BC
AFC, BFC	AFC, BFC
AF, BF	AF, BF
AR, BR	AR, BR
AFR, BFR	AFR, BFR
AL, BL	AL, BL
JAC	JAC
JAF	JAF
JAR	JAR
JAW	JAW
JAL	JAL
JC	JC
X-FE	X-FE
FE	FE
GC	GC
ZYR10	ZYR10
PTH	PTH
JAD	JAD
DPS	DPS

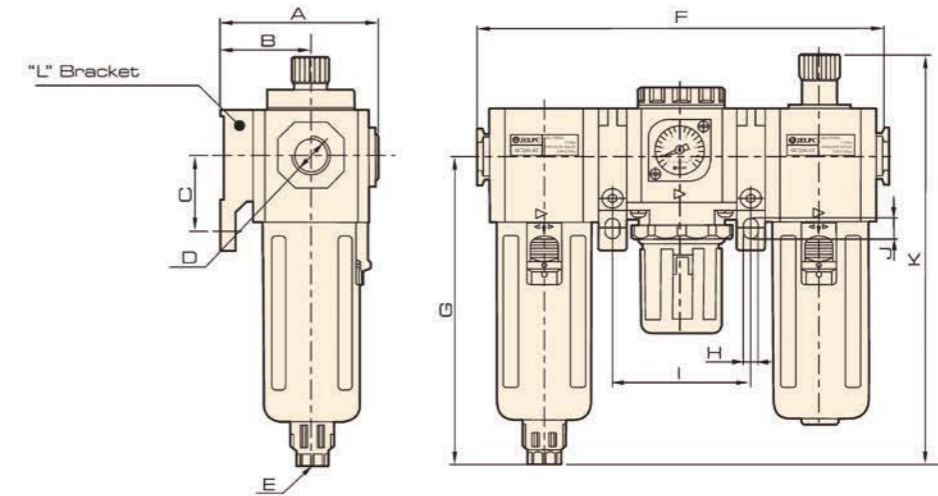
Overall Dimension

GC 200



GC 300

GC 400



Dimension

Model / Symbol	A	B	C	D	E	F	G	H	I	J	K
GC300-08	71	41.5	35	PT 1/4	PS 1/8	188	143	6.5	64	9	188
GC300-10	71	41.5	35	PT 3/8	PS 1/8	188	143	6.5	64	9	188
GC300-15	71	41.5	35	PT 1/2	PS 1/8	188	143	6.5	64	9	188
GC400-10	85.5	50	40	PT 3/8	PS 1/4	248	166.5	8.6	84	12	216
GC400-15	85.5	50	40	PT 1/2	PS 1/4	248	166.8	8.6	84	12	216