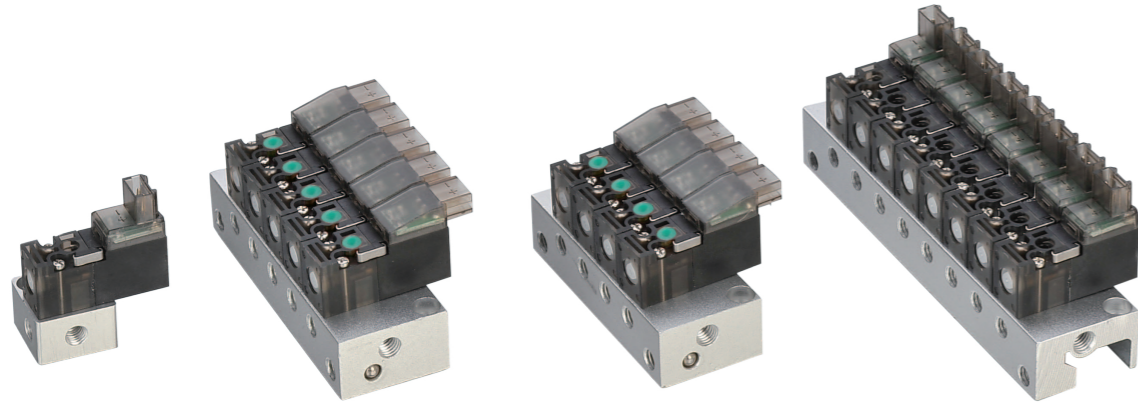


JEL10 Series Mini Solenoid Valve



ISO9001:2015 CE

JEL10 Series Mini Solenoid Valve

Specification

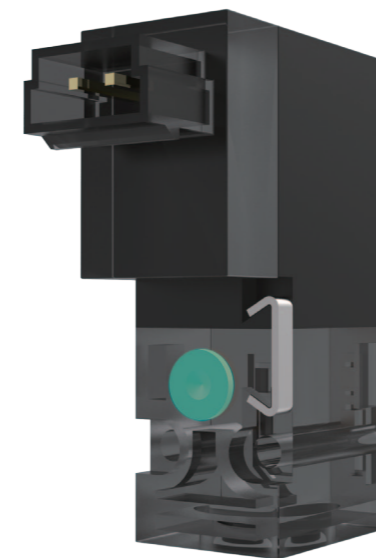
Model	JEL10
Type	3/2 Normal close
Fluid	Air, inert gas
Ambient And Fluid Temp.	-10°C ~ +75°C
Working Pressure	0 ~ 7bar
Port Size	Φ0.7mm
P → A	CV:0.008 b:0.11
A → R	CV:0.015 b:0.35
Lubrication	Without

Coil Specification

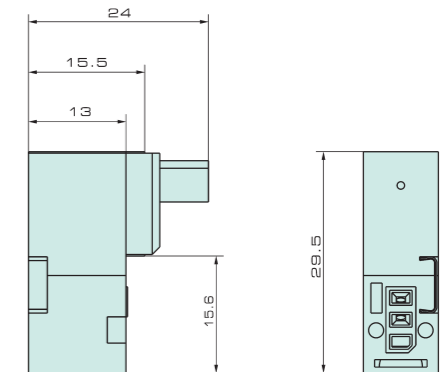
Wiring	Vertical (L) Horizontal (M)
*Standard Voltage	DC24V / 12V
Voltage Pulsation	±10%
Power	1.2W
Insulation Grade	H
Life Cycle	>5000million times
Indicator	LED
Working Frequency	>30Hz
Response Time	6~8ms
Protection	Dust-proof

*Note: The valve won't work when polarity reversed.

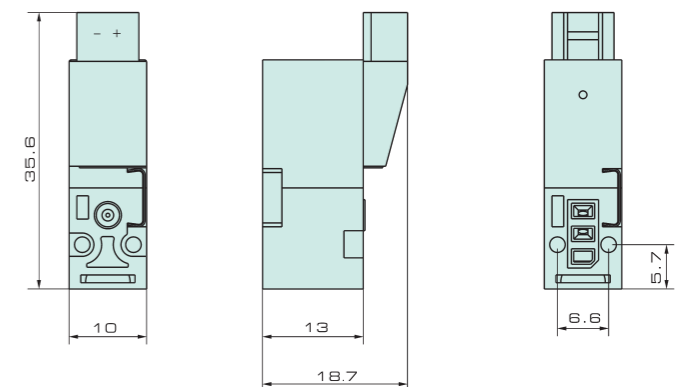
Overall Dimension



Connecting Type : L



Connecting Type : M



Features

1. Body material – import DuPont high-strength nylon from U.S. with low water absorption and wide temperature range from -40 °C ~120 °C , to ensure dimensional stability.
2. Coil – Import lacquer wire from Germany and wind by high precise winding machine to be sure consistency. To use special plastic coating machine and moulds from Germany with segmented pressure control technology for temperature to reach critical dimension within a tolerance of ± 0.005.
3. Seal – main seal using deformation resistance of fluoro rubber imported from Japan, so that the entire valve temperature resistance can be -20 °c ~100 ° c
4. Structure – non-tube structure with the high-strength skeleton material of high and low temperature resistance, low coefficient of anti-friction.
5. Assembly – semiautomatic assembly, with specially dedicated fixture to get the consistency, more than 95% of assembly quality rate.
6. Leakage Inspection – 100% of automatic and manual test for leakage, and total internal and external leakage is less than 2ml/min.
7. Through this series of materials, processes and equipment guarantee, JEL10 miniature solenoid valve can be up to 100 million life times. The valve is mostly used in the textile industry, the medical device industry and the electronic industry.

Ordering Code

JEL	10	A	L	H	1	F
	Power	Voltage	Connecting	Manual Ride Spindle	Wire Length	Joint
	1.2W	A: DC24V B: DC12V	L : L M : M	H: With manual ride spindle E: Without manual ride spindle	1 : 300mm 2 : 600mm 3 : Ribbon wire 300mm 4 : Ribbon wire 600mm 5 : Optional	1F-20F

- Valve
- J4V
- J4V100
- J4V200
- J4V300
- J4V400
- 5V
- Manifold
- JSY
- 5JV
- MCS
- JVT307
- JEL
- MVSD
- VF
- BM
- NAMUR
- 551
- JEL10
- 3VJZF
- Diaphragm
- JELVD
- 3V1
- Coil
- 2P
- 2V
- 2W
- 2W(Big)
- 2L
- VX
- PU
- PU225
- 2Q
- JEL5404
- JEL6213
- BU
- Pulse
- JELJZF
- 4H
- TSV
- MPV
- 4HV
- HV, K
- 4R
- 4F210
- FV
- MSV
- JM
- ASC, RE
- QE, QEA
- ST
- HSV