

MSQ Series

Rotary Platform (Gear Type)



ISO9001:2015 CE

MSQ Series

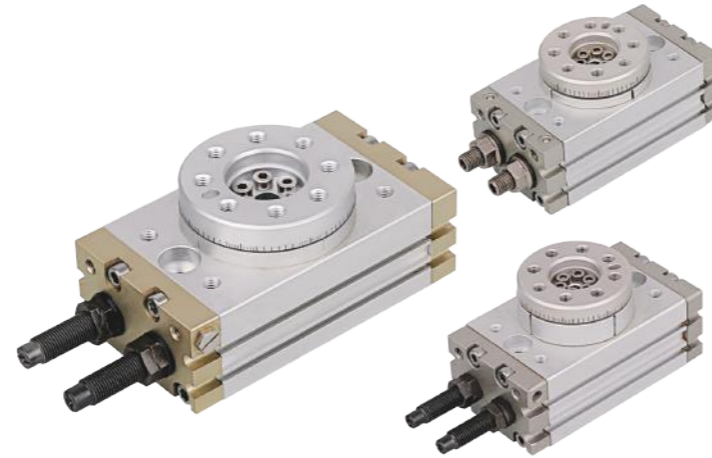
Rotary Platform (Gear Type)

Max. Load

Model	Max.honjontal load (N)	Max. vertical load (N)		Max. bending (N.m)
		(a)	(b)	
MSQ□10□	78	74	78	2.4
MSQ□20□	147	137	137	4.0
MSQ□30□	196	197	363	5.3
MSQ□50□	314	296	451	9.7
MSQ□70□	333	296	476	12.0
MSQ□100□	390	493	708	18.0
MSQ□200□	543	740	1009	25.0

Features

1. High precision balls used in bearing, vertical and horizontal precision are up to ± 0.01 mm.
2. Rotational type is easy for installation.
3. Rolling bearing design, load is 3 to 4 times larger than CRQ series.
4. Rotation is smooth and accurate.
5. Hollowed center rods for wire or tube to go through.
6. Standard angle adjusting device for wider angle adjustment ($0^\circ \sim 190^\circ$).
7. With magnet ring for sensor switch application.



Ordering Code

MSQB	10	A	MT
Model	Bore	Type	Sensor
10 70	20 100	A: With angle adjusting screw	Blank: Without sensor
30 200	50	R: With hydraulic Cushion device	* To choose proper sensor switch, please refer to stroke/ sensor switch chart.
			* Standard wire length is 1 meter, please specify for other length

Stroke / Sensor Switch Model

Model	*Sensor Switch Model (For Slide Installation)
10	
20	D-A90L
30	D-A93L
50	D-A96L
70	D-F9NL
100	D-F9BL
200	

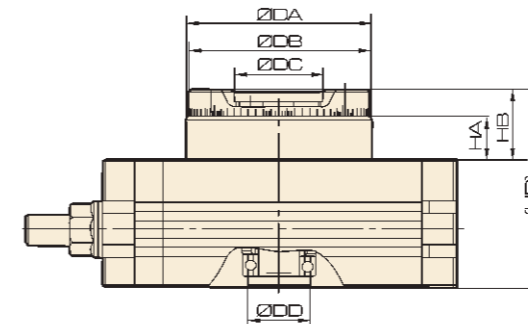
Specification

Bore (mm)	10	20	30	50	70	100	200
Operation Fluid	Air (Non-lub)						
Operation	Double Acting						
Max. Operation Pressure	1 MPa						
	0.6 MPa						
Min. Operation Pressure	0.1 MPa						
Ambient and fluid temperature	0~60 °C						
Cushion	Rubber Buffer (Standard) / Hydraulic Cushion device (Optional)						
Function	With angle adjusting screw	0.007J	0.025J	0.048 J	0.081J	0.24J	0.32J
	With hydraulic Cushion	0.039J	0.116J		0.294J	1.1J	1.6J
Angle adjusting range	0~190°						
Max. rotating angle	190°						
Steady rotating Time range	With angle adjusting screw	0.2~1.0s/90°			0.2~1.5s/90°	0.2~2.0s/90°	0.2~2.5s/90°
	With hydraulic Cushion	0.2~0.7s/90°			0.2~1.0s/90°		
Bore	Φ15	Φ18	Φ21	Φ25	Φ28	Φ32	Φ40
Port Size	M5 x 0.8			Rc1/8			

Max. operation pressure is subject to the Max. load of hydraulic Cushion device.

Overall Dimension

MSQA



Model	DA	DB	DC	DD	HA	HB	BD
MSQA10□	46h8	45h8	20H8	15H8	10	18.5	52.5
MSQA20□	61h8	60h8	28H8	17H8	15.5	26	63
MSQA30□	67h8	65h8	32H8	22H8	16.5	27	67
MSQA50□	77h8	75h8	35H8	26H8	17.5	30	76

Cylinder
Calculation
SI
SI A.
SIB
SQ
DNT
SC / SU
SCT
SC A.
SL
DN
DSN
DN/DSN A.
MA
MAC
MA/MAC A.
MAL
MALC
MAL/MALC A.
SDA
CQ2
TCQ2
ADN
TADN
PPRM
MHL2
Pneumatic Fingers
MXH/MXQ
CJP
CJ2
CDU
TN
CXS
MGP
MSQ

Cylinder
Calculation
SI
SI A.
SIB
SQ
DNT
SC / SU
SCT
SC A.
SL
DN
DSN
DN/DSN A.
MA
MAC
MA/MAC A.
MAL
MALC
MAL/MALC A.
SDA
CQ2
TCQ2
ADN
TADN
PPRM
MHL2
Pneumatic Fingers
MXH/MXQ
CJP
CJ2
CDU
TN
CXS
MGP
MSQ

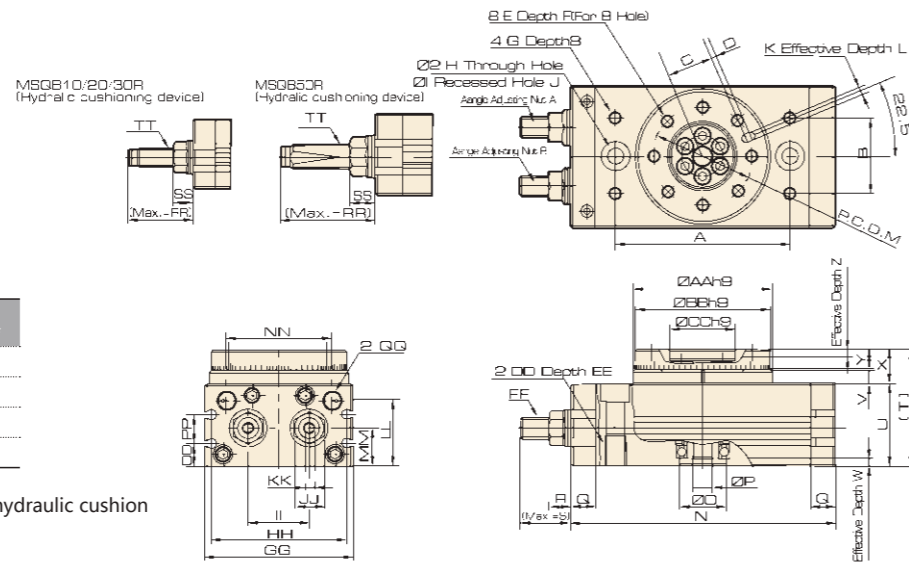
MSQ Series

Rotary Platform (Gear Type)



Overall Dimension

MSQB
 Ø10, 20, 30, 50



Model	Adjusting angle reached per round*
MSQB10□	Aboves 10.2°
MSQB20□	Aboves 7.2°
MSQB30□	Aboves 6.5°
MSQB50□	Aboves 8.2°

In case of angle adjusting screw or hydraulic cushion twisting one circle.

Dimension

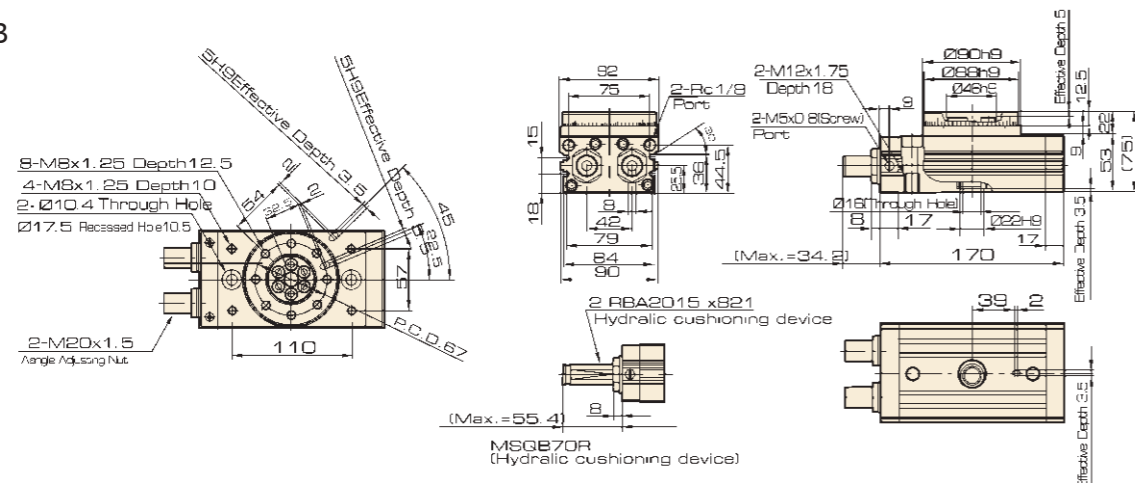
Model	A	B	C	D	E	F	G	H	I	J	K	L	M	N	O	P	Q	R	S	T	U	V	W	X	Y	Z
MSQB10□	60	27	15	2	M5 x 0.8	8	M5x0.8	6.8	11	6.5	3H9	3.5	32	92	15H9	5	9.5	8.6	17.7	47	34	4.5	3	13	8	4
MSQB20□	76	34	20.5	2	M6 x 1	10	M6x1	8.6	14	8.5	4H9	4.5	43	117	17H9	9	12	10.6	25	54	37	6.5	2.5	17	10	6
MSQB30□	84	37	23	2	M6 x 1	10	M6x1	8.6	14	8.5	4H9	4.5	48	127	22H9	9	12	10.6	25	57	40	6.5	3	17	10	4.5
MSQB50□	100	50	26.5	2	M8 x 1.25	12	M8x1.25	10.5	18	10.5	5H9	5.5	55	152	26H9	10	15.5	14	31.4	66	46	7.5	3	20	12	5

Model	AA	BB	CC	DD	EE	FF	GG	HH	II	JJ	KK	LL	MM	NN	OO	PP	QQ	RR	SS	TT	Code of Hydraulic Cushion device
MSQB10□	46	45	20	M8 x 1.25	12	M8 x 1	50	45	20	12	4	27.8	15.5	34.5	9	13	M5 x 0.8	31.5	8.6	M8 x 1	RBA0805-X692
MSQB20□	61	60	28	M10 x 1.5	15	M10 x 1	65	60	27.5	14	5	28.8	16	51	10	12	M5 x 0.8	34.7	10.6	M10 x 1	RBA1006-X692
MSQB30□	67	65	32	M10 x 1.5	15	M10 x 1	70	65	29	14	5	32	18.5	50	11.5	14	1/8	34.7	10.6	M10 x 1	RBA1006-X692
MSQB50□	77	75	35	M12 x 1.75	18	M14 x 1.5	80	75	38	19	6	37.5	22	63	14.5	15	1/8	51.7	14	M14 x 1.5	RBA1411-X692

Max. measurement is at Max. rotation angle (190°)

Overall Dimension

MSQB
 Ø70



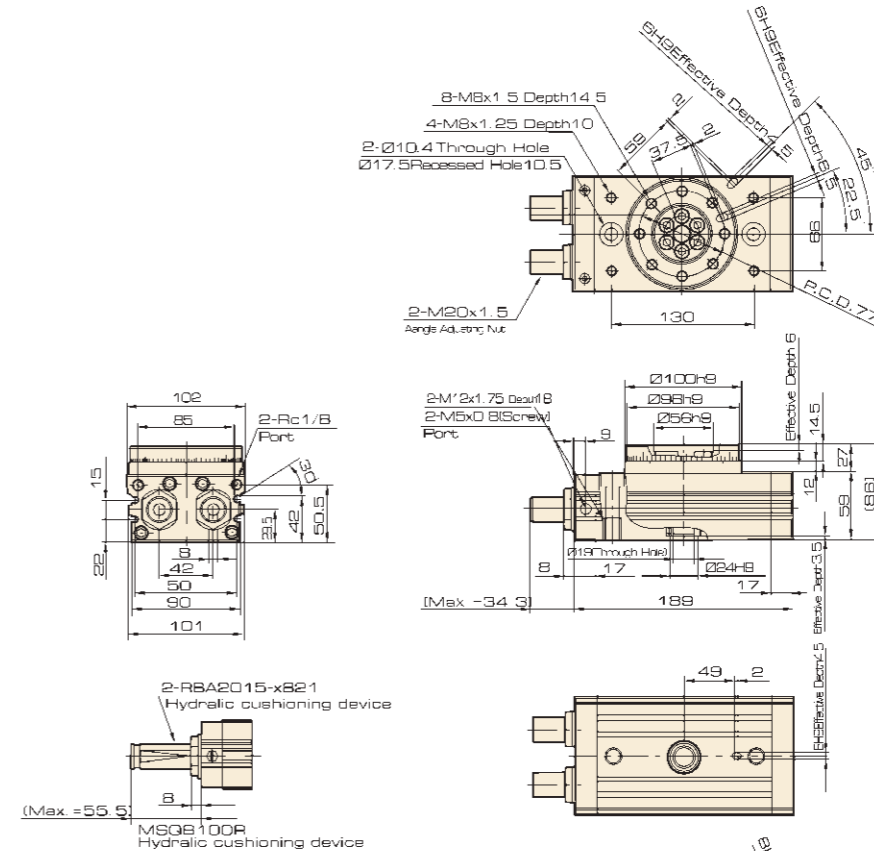
ISO9001:2015 CE

MSQ Series

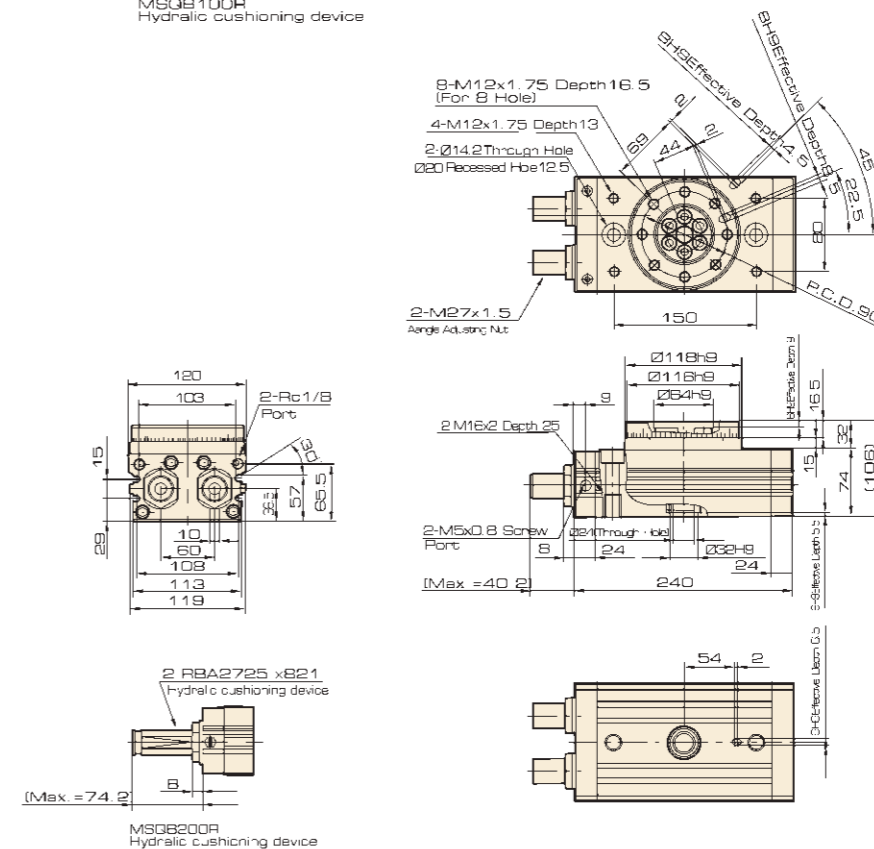
Rotary Platform (Gear Type)

Overall Dimension

MSQB
 Ø100



MSQB
 Ø200



Cylinder
 Calculation
 SI
 SI A.
 SIB
 SQ
 DNT
 SC / SU
 SCT
 SC A.
 SL
 DN
 DSN
 DN/DSN A.
 MA
 MAC
 MA/MAC A.
 MAL
 MALC
 MAL/MALC A.
 SDA
 CQ2
 TCQ2
 ADN
 TADN
 PPRM
 MHL2
 Pneumatic Fingers
 MXH/MXQ
 CJP
 CJ2
 CDU
 TN
 CXS
 MGP
 MSQ

Cylinder
 Calculation
 SI
 SI A.
 SIB
 SQ
 DNT
 SC / SU
 SCT
 SC A.
 SL
 DN
 DSN
 DN/DSN A.
 MA
 MAC
 MA/MAC A.
 MAL
 MALC
 MAL/MALC A.
 SDA
 CQ2
 TCQ2
 ADN
 TADN
 PPRM
 MHL2
 Pneumatic Fingers
 MXH/MXQ
 CJP
 CJ2
 CDU
 TN
 CXS
 MGP
 MSQ