

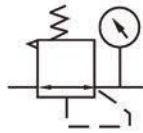


FRL
AC, BC
AFC, BFC
AF, BF
AR, BR
AFR, BFR
AL, BL
JAC
JAF
JAR
JAW
JAL
JC
X-FE
FE
GC
ZYR10
PTH
JAD
DPS

Ordering Code

ZYR10	KR
Model	Valve Type
ZYR10	KR: With Overflow XD: Without Overflow

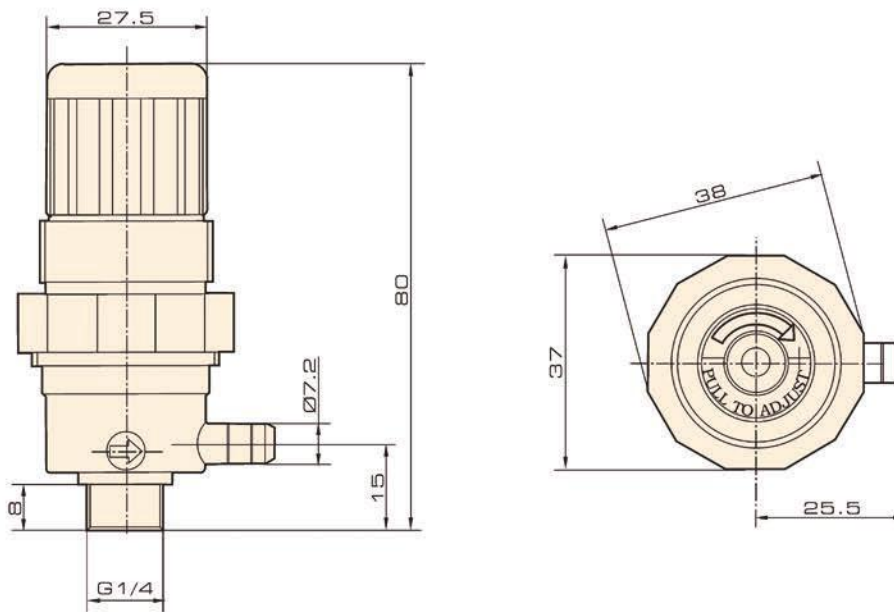
Symbol



Specification

Model	ZYR10
Orifice	4mm
Working Medium	Compressed Air
Working Pressure Range	0 ~ 0.08 MPa
Medium Temperature	5 ~ +60 °C
Ambient Temperature	5 ~ +60 °C
Port Size	G1/4"

Overall Dimension



PTH Series

Air Filter Combination



R07

B07

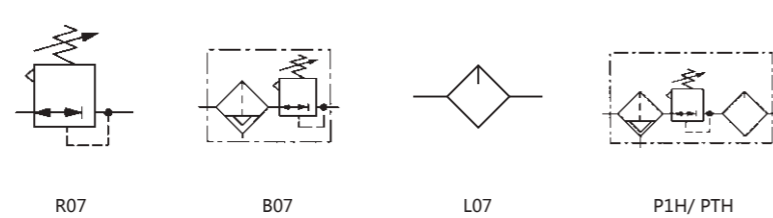
L07

PTH

Ordering Code

PTH	200
Series	Port Size
R07 series pipe type regulator	100: 1/8"
B07 series Pipe type filter-regulator	200: 1/4"
L07 micro type lubricator	
P1H/ PTH series filter, regulator and lubricator	

Symbol



R07

B07

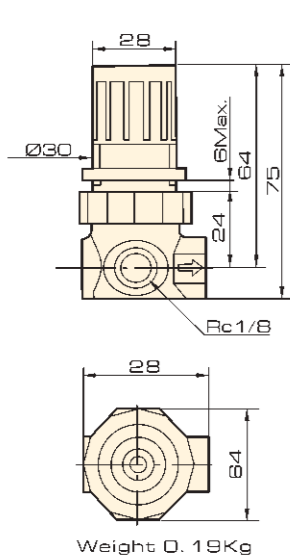
L07

P1H/ PTH

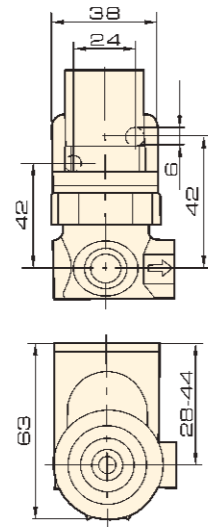
Specification

Model	R07	B07	L07	P1H/PTH
Operating Fluid	Compressed Air			
Inlet Pressure	0~10 bar	0~10 bar (Transparent cup)	Transparent cup: 6.3 bar	0~10 bar
Pressure Gauge Port	Rc1/8			
Ambient Temperature	-20~50 °C	Transparent cup: -20~50 °C	-	-
Body Material	Aluminium alloy			

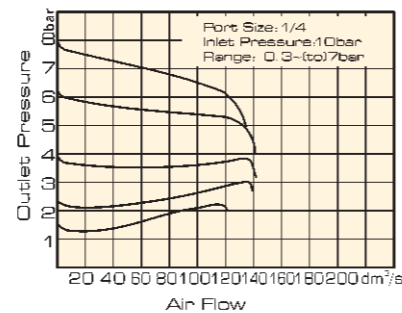
R07 Dimension



Installation bracket



Flow characteristic



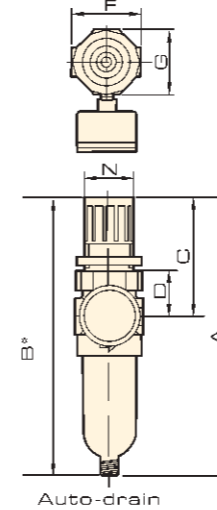
FRL
AC, BC
AFC, BFC
AF, BF
AR, BR
AFR, BFR
AL, BL
JAC
JAF
JAR
JAW
JAL
JC
X-FE
FE
GC
ZYR10
PTH
JAD
DPS

PTH Series

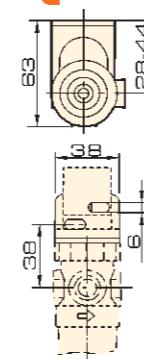
Air Filter Combination

ISO9001:2015 CE

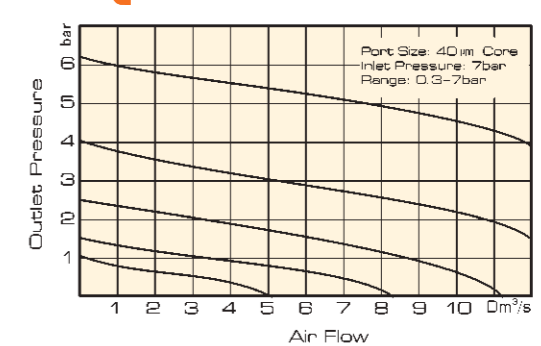
B07 Dimension



Installation bracket



Flow characteristic

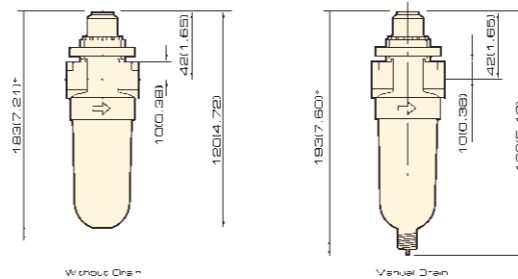


* Minimum clearance required to remove bowl
* 1/8 BSP exhausting connector

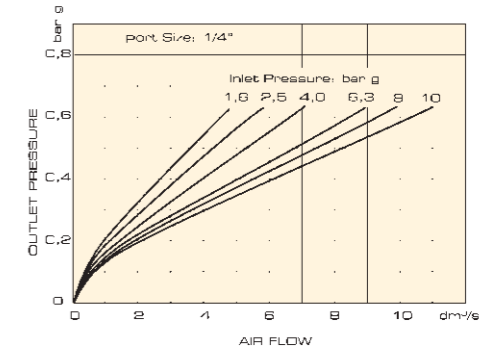
Connector	Automatic	A	B	C	D	F	G	Panel Hole	Panel Thickness	Kg
G1/8, G1/4	Without	160	210	68	28	41	38	30	0~6	0.26
G1/8, G1/4	Manual	164	214	68	28	41	38	30	0~6	0.26

Overall Dimension L07

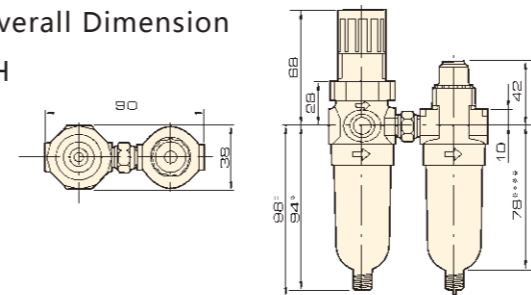
* Minimum clearance required to remove bowl



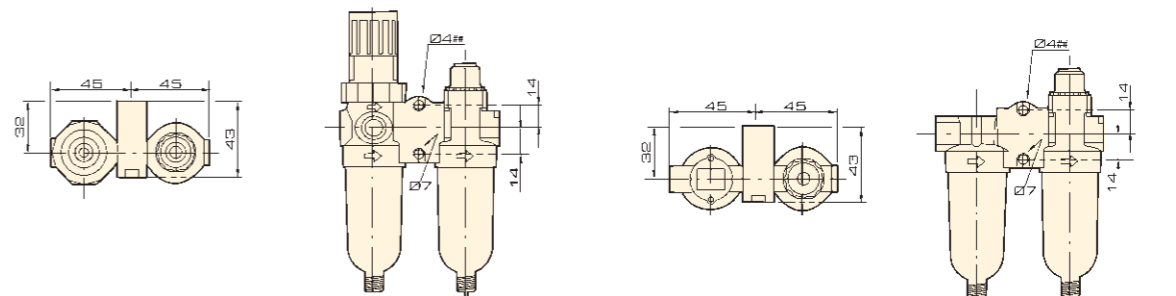
Flow characteristic



Overall Dimension P1H



PTH Boxed Sets



FRL
AC, BC
AFC, BFC
AF, BF
AR, BR
AFR, BFR
AL, BL
JAC
JAF
JAR
JAW
JAL
JC
X-FE
FE
GC
ZYR10
PTH
JAD
DPS

JAD Series Auto-drain



Ordering Code

JAD	402	02
Specification	Series	Inlet Port Size
JAD: Auto-drain	402 Series	02: G1/4 03: G3/8 04: G1/2

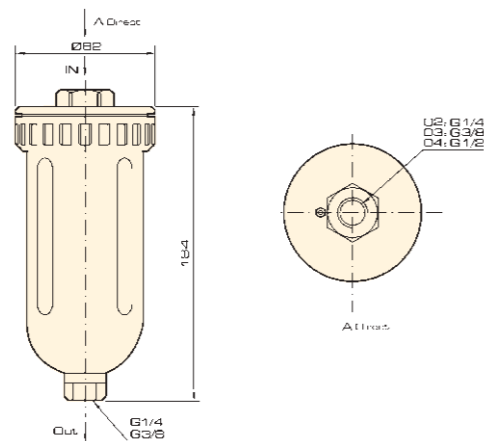
Symbol



Specification

Model	JAD402-02	JAD402-03	JAD402-04
Working Medium	Air		
Inlet Port Size	G1/4	G3/8	G1/2
Outlet Port Size	G1/4	G1/4	G3/8
Proof Pressure	1.5 MPa		
Max. Test Pressure	1.0 MPa		
Ambient Temperature Range	5~60 °C		

Overall Dimension



ISO9001:2015 CE

DPS Series Digital Pressure Sensor



Ordering Code

DPS	3	10	R	N	□
Series Code	Measurement Range	Pressure Port Size	Sensor Type	Optional 1	
DPS-3 : 3 Series Digital Pressure Sensor	10 : -100~100kPa 01 : -100~100kPa	R : R1/8 (Female thread M5) N : NPT1/8 (Female thread M5) G : G1/8 (Female thread M5)	N : Simplex NPN output (*1) P : Simplex PNP output X : NPN+PNP output	M : Selection panel N : Selection panel +dust cover Z : Selection L bracket S : Selection S bracket	

*Note: Products with Simplex design, NPN or PNP output is available, black wire is NPN, white wire is PNP.

Specification

Model	DPS-301 (Mixed pressure)	DPS-310 (Positive pressure)	
Pressure Measurement	Measuring Range	-100~100kPa	-0.100~1.000MPa
	Predetermined Range	-100~100kPa	0.000~1.000MPa
	Max Pressure	500kPa	1.500MPa
	Pressure Form	Non-flammable, Non-corrosive gas, Gauge pressure measurement	
	Measurement Precision	≤ ±2%F. S. (Environment temperature 25°C)	
	Temperature Error	≤ ±3%F. S. (Temperature range 0~50°C)	
	Measurement Mode	Single point mode Hysteresis mode Window mode	
Pressure Port Size	Male thread R1/8, NPT1/8, G1/8, Female thread M5		
Pressure Display	Basic Description	LCD display, 4-digit measurement quantity, unit display, output status display	
	Display Mode	Adjustable backlight, total 4 display modes	
Input Power	Voltage Range	12~24VDC±10%	
	Power Consumption	40mA Max (no load)	
Output Signal	Transistor Output	NPN open collector output Output Electric current : 80mA Max Internal pressure drop : ≤ 1V	PNP open collector output Output Electric current : 80mA Max Internal pressure drop : ≤ 1V
	Response Time	Adjustable : 2.5ms, 20ms, 100ms, 500ms, 1000ms, 2000ms	
	Short circuit Protection	Yes	
Environmental Resistance	IP Grade	IP40	
	Environment Temperature	Use environment temperature : 0~50°C, Keep environment temperature : -20~60°C	
	Environment Humidity	Use environment humidity : 35~80%RH	
	Insulation Voltage	1000VAC 1 minute	
	Insulation Resistance	≥ 50MΩ (500VDC)	
	Shock Proof	Max 100m/s ² , 3 axis & 6 directions/3times	
	Resistant to Vibration	Amplitude 1.5mm, 10HZ~500HZ, 3axis/2h	