

SC / SU Series Standard Cylinder



Ordering Code

SC	D	50	50	25	S	LB	MT
Series	Series Code	Bore	Stroke	Adjustable Stroke	Magnet	Mountings	Sensor
SC: Tie rod type	Blank: Standard double acting	32	10: 10mm	S: With magnet	Blank: Basic mounting	JEL-21R Type	
		40	20: 20mm	Blank: Without magnet	LB: Foot		
		50	30: 30mm		FA: Front flange	SC: Bracket for switch	
SU: Profile type	D: Double-shaft double acting	63	50: 50mm		FB: Back flange	SU: Bracket for switch	
		80	75: 75mm		CA: Back hinge		
		100	100: 100mm		CB: Back hinge		
	J: Double-shaft with adjustable stroke type	125			TC-M: Center trunnion		

* Standard wire length is 1 meter, please specify for other length

Specification

Bore (mm)	32	40	50	63	80	100	125
Operation	Double Acting						
Working Medium	Air						
*Mountings	Basic FA FB CA CB LB TC TC-M						
Operating Pressure Range	1 ~ 9.0Kgf/cm ²						
Proof Pressure	13.5Kgf/cm ²						
Operating Temperature Range	-20 ~ 80°C						
Operating Speed Range	50 ~ 800mm/s						
Cushion	Adjustable Cushion						
Adjustable Cushion Stroke	20mm			26mm			
Port Size	G1/8"	G1/4"	G3/8"		G1/2"		

* SCD, SCJ mountings: FA, FB, LB, TC and TC-M type.

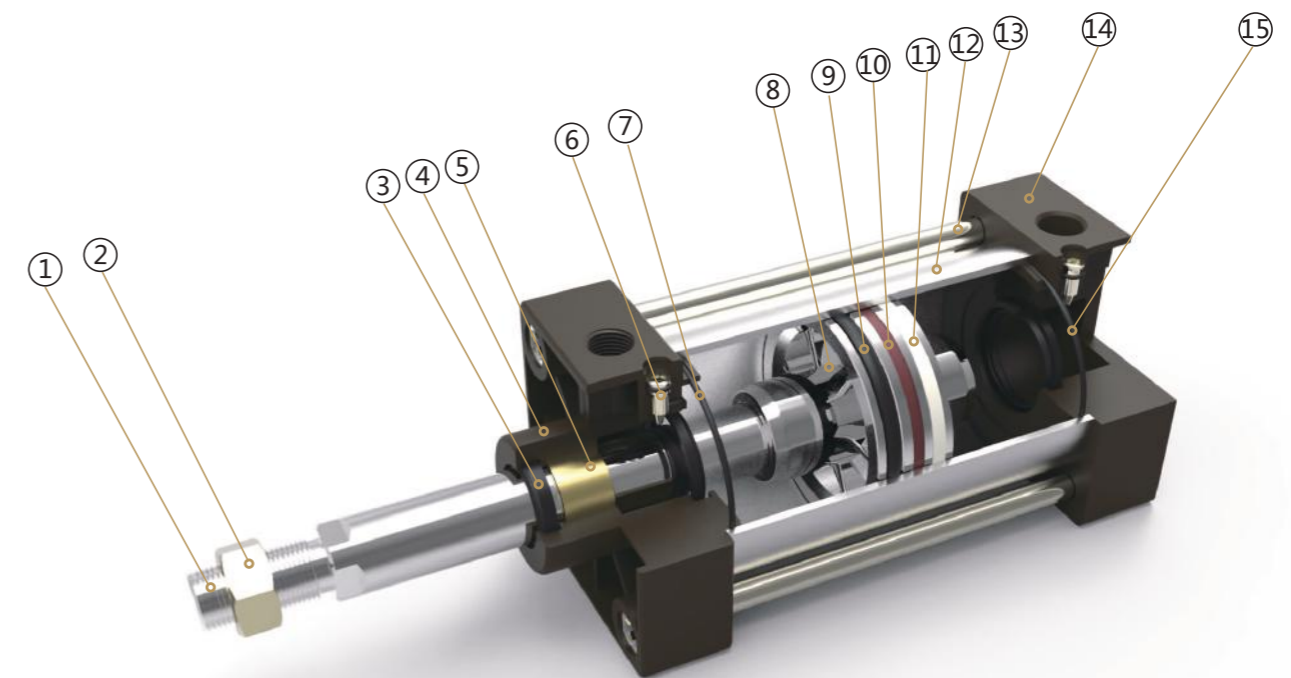
ISO9001:2015 CE

SC / SU Series Standard Cylinder

Stroke

Bore	Standard Stroke	Max. Stroke	Allowable Stroke
32	25 50 75 80 100 125 150 160 175 200 250 300 350 400 450 500	1000	2000
40	25 50 75 80 100 125 150 160 175 200 250 300 350 400 450 500 600 700 800	1200	2000
50	25 50 75 80 100 125 150 160 175 200 250 300 350 400 450 500 600 700 800 900 1000	1200	2000
63	25 50 75 80 100 125 150 160 175 200 250 300 350 400 450 500 600 700 800 900 1000	1500	2000
80	25 50 75 80 100 125 150 160 175 200 250 300 350 400 450 500 600 700 800 900 1000	1500	2000
100	25 50 75 80 100 125 150 160 175 200 250 300 350 400 450 500 600 700 800 900 1000	1500	2000
125	25 50 75 80 100 125 150 160 175 200 250 300 350 400 450 500 600 700 800 900 1000	1500	2000

Internal Structure



Parts

Number	Name	Number	Name
1	Piston rod	9	Piston seal
2	Hexagon nut	10	Magnet
3	Shaft seal	11	Anti-friction ring
4	Front cover	12	Barrel
5	Copper tube	13	Pull rod
6	Cushion adjust screw	14	Back cover
7	Cushion seal	15	O ring
8	Piston		

Cylinder
Calculation
SI
SI A.
SIB
SQ
DNT
SC / SU
SCT
SC A.
SL
DN
DSN
DN/DSN A.
MA
MAC
MA/MAC A.
MAL
MALC
MAL/MALC A.
SDA
CQ2
TCQ2
ADN
TADN
PPRM
MHL2
Pneumatic Fingers
MXH/MXQ
CJP
CJ2
CDU
TN
CXS
MGP
MSQ

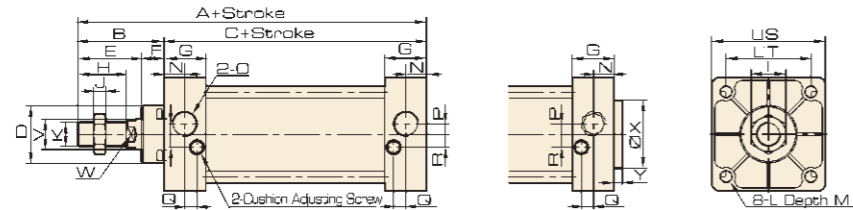
Cylinder
Calculation
SI
SI A.
SIB
SQ
DNT
SC / SU
SCT
SC A.
SL
DN
DSN
DN/DSN A.
MA
MAC
MA/MAC A.
MAL
MALC
MAL/MALC A.
SDA
CQ2
TCQ2
ADN
TADN
PPRM
MHL2
Pneumatic Fingers
MXH/MXQ
CJP
CJ2
CDU
TN
CXS
MGP
MSQ

SC / SU Series Standard Cylinder

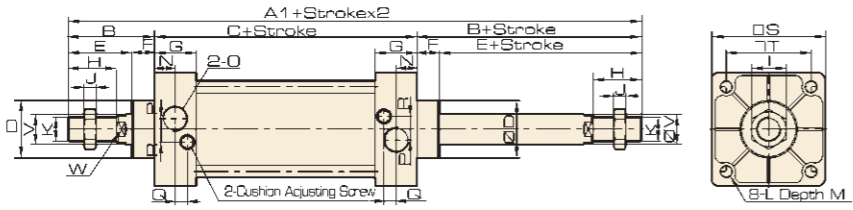


Overall Dimension

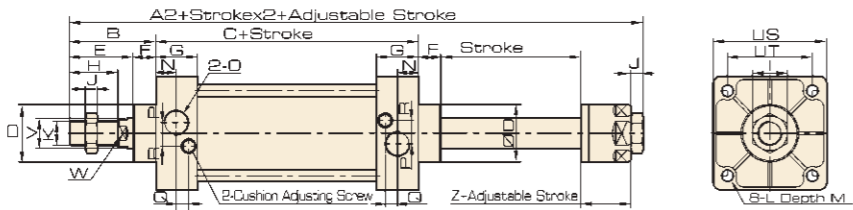
SC



SCD



SCJ



Dimension

Bore/ Symbol	A	A1	A2	B	C	D	E	F	G	H	I	J	K	L
32	140	187	182	47	93	28	32	15	27.5	22	17	6	M10x1.25	M6
40	141	191	185	48	93	32	34	15	27.5	24	17	7	M12x1.25	M6
50	150	207	196	57	93	38	42	15	27.5	32	23	8	M16x1.5	M6
63	153	210	199	57	96	38	42	15	27.5	32	23	8	M16x1.5	M8
80	183	258	243	75	108	47	54	21	33	40	26	10	M20x1.5	M10
100	189	264	249	75	114	47	54	21	33	40	26	10	M20x1.5	M10
125	226	330	313	104	122	55	70	34	33	54	40	10	M27x2	M12

Bore/ Symbol	M	N	O	P	Q	R	S	T	V	W	Z	X	Y
32	9.5	13.5	G1/8	3.5	7.5	7	45	33	12	10	21	/	/
40	9.5	1.5	G1/4	6	8.2	9	50	37	16	14	21	/	/
50	9.5	13.5	G1/4	8.5	8.2	9	62	47	20	17	23	/	/
63	9.5	13.5	G3/8	7	8.2	8.5	75	56	20	17	23	/	/
80	11.5	16.5	G3/8	10	9.5	14	94	70	25	22	25.5	/	/
100	11.5	16.5	G1/2	11	9.5	14	112	84	25	22	25.5	/	/
125	15.5	16.5	G1/2	10	10	11	140	110	32	27	30	/	/

ISO9001:2015 CE

SCT Series Multi-position Cylinder



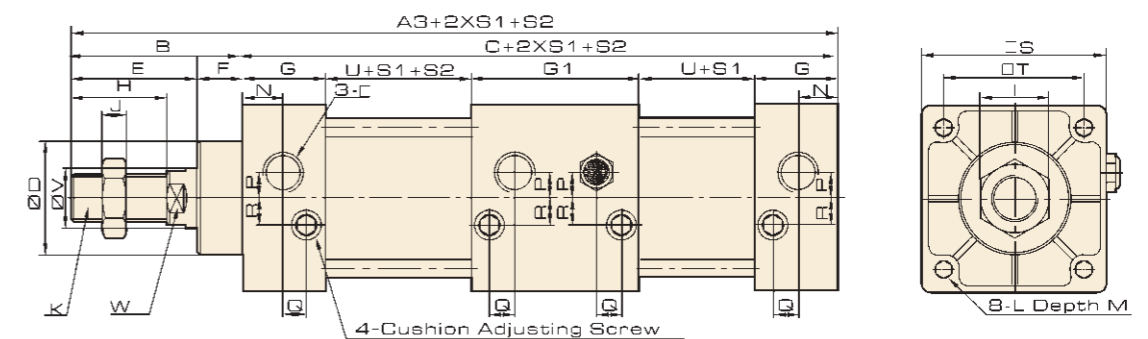
Ordering Code

SCT	63	x	30	-	50	-	S	-	LB
Series	Bore		Stroke 1		Stroke 2		Magnet		Mountings
SCT: Multi-position cylinder	32						S: With magnet Blank: Without magnet		Blank: Basic mounting LB: Foot FA: Front flange FB: Back flange CA: Back hinge CB: Back hinge
	40								
	50								
	63								
	80								
	100								

*It is booster cylinder while second stroke is 0.

Overall Dimension

SCT



Dimension

Bore/ Symbol	A3	B	C	D	E	F	G	G1	H	I	J	K
32	233	47	186	28	32	15	27.5	55	22	17	6	M10x1.25
40	235	49	186	32	34	15	27.5	55	24	17	7	M12x1.25
50	243	57	186	38	42	15	27.5	55	32	23	8	M16x1.5
63	249	57	192	38	42	15	27.5	55	32	23	8	M16x1.5
80	296	75	221	47	54	21	33	73	40	26	10	M20x1.5
100	310	75	235	47	54	21	33	73	40	26	10	M20x1.5
125	350	104	122	55	70	34	33	66	54	40	10	M27x2

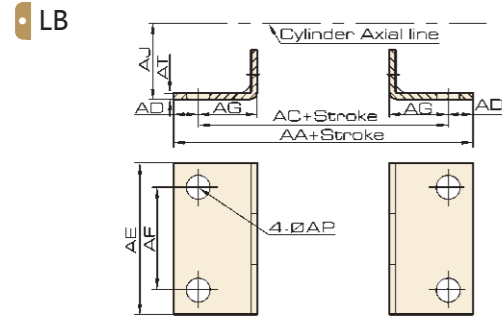
Bore/ Symbol	L	M	N	O	P	Q	R	S	T	V	U	W
32	M6x1	9.5	13.7	G1/8	3.5	7.5	7	45	33	12	38	10
40	M6x1	9.5	13.5	G1/4	6	8.2	9	50	37	16	38	14
50	M6x1	9.5	13.5	G1/4	8.5	8.2	9	62	47	20	38	17
63	M8x1.25	9.5	13.5	G3/8	7	8.2	8.5	75	56	20	41	17
80	M10x1.5	11.5	16.5	G3/8	10	9.5	14	94	70	25	41	22
100	M10x1.5	11.5	16.5	G1/2	10	9.5	14	112	84	25	47	22
125	M12x1.75	15.5	16.5	G1/2	10	10	11	140	110	32	57	27

Cylinder
Calculation
SI
SI A.
SIB
SQ
DNT
SC / SU
SCT
SC A.
SL
DN
DSN
DN/DSN A.
MA
MAC
MA/MAC A.
MAL
MALC
MAL/MAC A.
SDA
CQ2
TCQ2
ADN
TADN
PPRM
MHL2
Pneumatic
Fingers
MXH/MXQ
CJP
CJ2
CDU
TN
CXS
MGP
MSQ

Cylinder
Calculation
SI
SI A.
SIB
SQ
DNT
SC / SU
SCT
SC A.
SL
DN
DSN
DN/DSN A.
MA
MAC
MA/MAC A.
MAL
MALC
MAL/MAC A.
SDA
CQ2
TCQ2
ADN
TADN
PPRM
MHL2
Pneumatic
Fingers
MXH/MXQ
CJP
CJ2
CDU
TN
CXS
MGP
MSQ

LB Foot

Overall Dimension

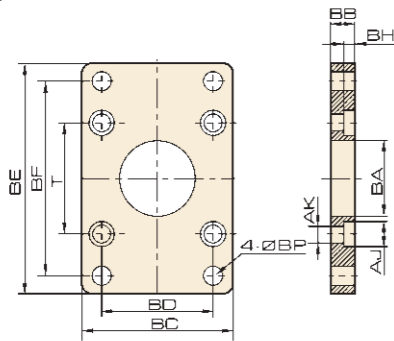


Dimension

Bore/Symbol	32	40	50	63	80	100	125	160	200
AA	153	169	173	184	200	210	249	328	380
AC	134	140	149	158	168	174	249	288	320
AD	9.5	14.5	12	12	16	18	18	20	28
AE	50	57	68	80	97	112	140	180	220
AF	33	36	47	56	70	84	90	115	135
AG	20.5	23.5	28	31	30	30	45	60	70
AJ	28	30	36.5	41	49	57	90	115	135
AP	9	12	12	12	14	14	16	18	22
AT	3	3	3	3	4	4	7	7	9

FA / FB Flange

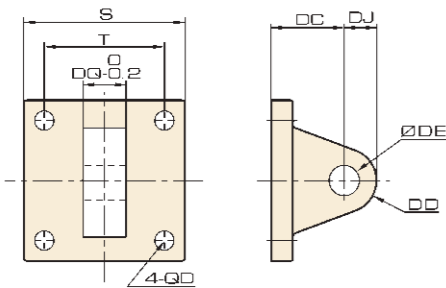
FA, FB



Bore/Symbol	32	40	50	63	80	100	125	160	200
BA	28.3	32.3	38.3	38.3	47.3	47.3	62	72	82
BB	10	10	10	12	16	16	20	20	25
BC	47	52	65	76	95	115	141	180	220
BD	33	36	47	56	70	84	90	115	135
BE	72	84	104	116	143	162	218	278	322
BF	58	70	86	98	119	138	180	230	270
BH	6.5	6.5	6.5	8.5	10.5	10.5	13	15	18
AJ	10.5	10.5	10.5	13.5	16.6	16.6	19	25	25
AK	6.5	6.5	6.5	8.5	10.5	10.5	12.5	18	18
BP	7	7	9	9	12	12	16	18	22
T	33	37	47	56	70	84	110	140	175

CA Clevis

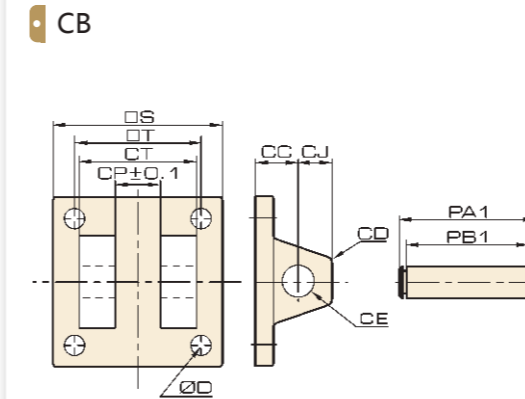
CA



Bore/Symbol	32	40	50	63	80	100	125	160	200
S	45	50	62	75	94	112	140	177	217
T	33	37	47	56	70	84	110	140	175
DC	34	34	34	34	48	48	50	55	60
DD	14	14	15	15	20	20	25	30	30
DE	12	14	14	14	20	20	25	30	30
DJ	14	14	15	15	20	20	25	28	25
DQ	16	20	20	20	32	32	70	90	90
D	6.5	6.5	6.5	8.5	10.5	10.5	12.5	18	18

CB Double Earring

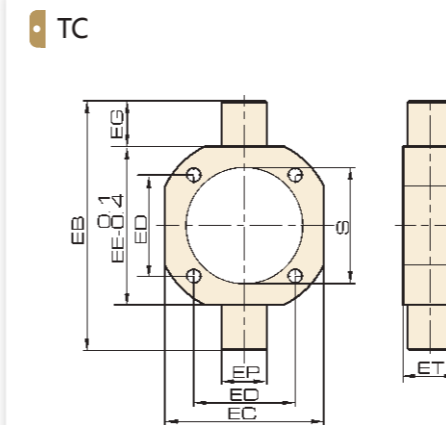
Overall Dimension



Dimension

Bore/Symbol	32	40	50	63	80	100	125	160	200
CC	19	19	19	19	32	32	50	55	60
CD	5	5	3	3	8	8	25	30	35
CE	12	14	14	14	20	20	25	30	30
CJ	13	13	15	15	21	21	25	25	33
CP	16.3	20.5	20.3	20.3	32.3	32.3	70	90	90
CT	32	44	52	52	64	64	120	162	176
PA1	41	53	61	61	75	75	136	176	188
PB1	34	46	54	54	66	66	124	162	177
S	48	50	62	75	94	112	140	176	217
T	33	37	47	56	70	84	110	140	175
D	6.5	6.5	6.5	8.5	10.5	10.5	12.5	18	18

Overall Dimension



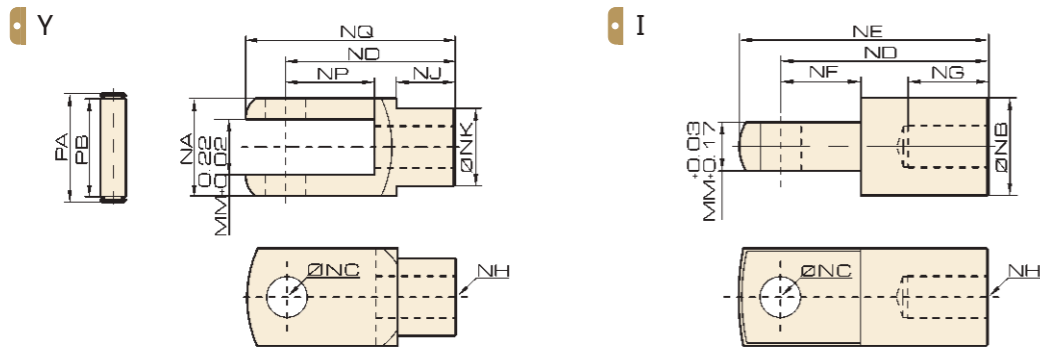
Bore/Symbol	32	40	50	63	80	100	125	160	200
EB	87	113	126	138	164	182	210	270	320
EC	53	63	76	88	114	132	150	203	250
ED	33	37	47	56	70	84	110	140	175
EE	55	63	76	88	114	132	160	204	247
EG	16	25	25	25	25	25	25	33	36.5
EP	16	25	25	25	25	25	30	32	32
ET	30	30	30	30	35	40	36	38	50
S	37.5	45.5	55.5	68.5	87.5	107.5	135	170	218

Cylinder
Calculation
SI
SI A.
SIB
SQ
DNT
SC / SU
SCT
SC A.
SL
DN
DSN
DN/DSN A.
MA
MAC
MA/MAC A.
MAL
MALC
MAL/MAC A.
SDA
CQ2
TCQ2
ADN
TADN
PPRM
MHL2
Pneumatic
Fingers
MXH/MXQ
CJP
CJ2
CDU
TN
CXS
MGP
MSQ

Cylinder
Calculation
SI
SI A.
SIB
SQ
DNT
SC / SU
SCT
SC A.
SL
DN
DSN
DN/DSN A.
MA
MAC
MA/MAC A.
MAL
MALC
MAL/MAC A.
SDA
CQ2
TCQ2
ADN
TADN
PPRM
MHL2
Pneumatic
Fingers
MXH/MXQ
CJP
CJ2
CDU
TN
CXS
MGP
MSQ

Y/I Knuckle

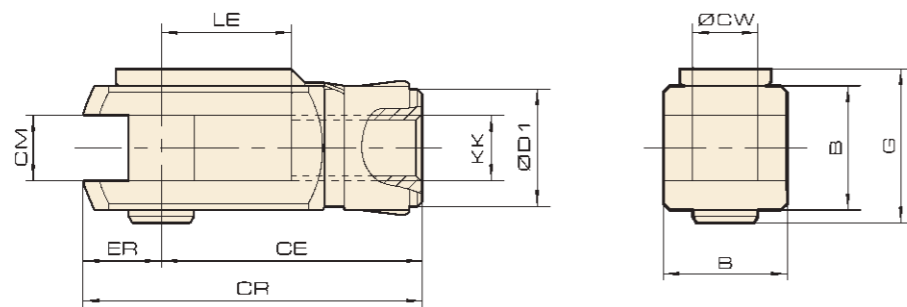
Overall Dimension



Dimension

Bore/Symbol	NA	NB	NC	ND	NE	NF	NG	NH	NJ	NK	MM	NP	NQ	PA	PB
32	19	20	10	40	52	15	20	M10×1.25	15.5	16	10	20	52	30	21
40	24	24	12	48	67	24	20	M12×1.25	20.5	20	12	24	62	36	27
50	32	32	16	64	89	32	23	M16×1.5	26	30	16	32	83	44	34
63	32	32	16	64	89	32	23	M16×1.5	26	30	16	32	83	44	34
80	40	40	20	80	112	40	30	M20×1.5	30	38	20	39.5	105	52	42
100	40	40	20	80	112	40	30	M20×1.5	30	38	20	39.5	105	52	42
125	62	49	20	99	122	54	50	M27×2	28	38	30	43	120	75	66
160	70	61	30	125	155	43	70	M36×2	40	53	40	43	153	96	82
200	70	61	30	125	155	43	70	M36×2	40	53	40	43	153	96	82

CK Type Y Knuckle

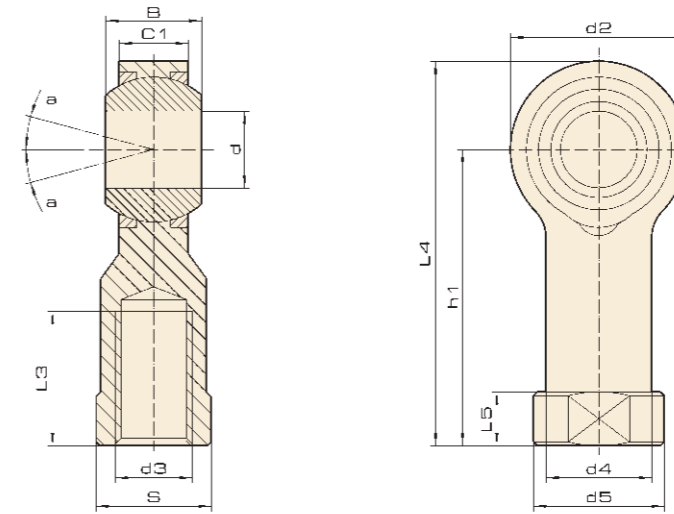


Dimension

Bore/Symbol	NH	KK	B	CE	CM	CR	CW	D1	ER	G	LE
20	CK-M06100	M6×1	12	24	6	31	6	10	7	16	12
25	CK-M08125	M8×1.25	16	10	8	42	8	14	10	20	16.5
32	CK-M10125	M10×1.25	18	40	10	52	10	18	12	25	20
40	CK-M12125	M12×1.25	24	48	12	62	12	20	14	29	24
50/63	CK-M16150	M16×1.5	32	63	16	83	16	27	20	38	33
80/100	CK-M20150	M20×1.5	40	80	20	105	20	35	25	47	41
125	CK-M27200	M27×2	55	112	30	148	30	48	36	65	54

PHSA Universal Piston Rod Eye

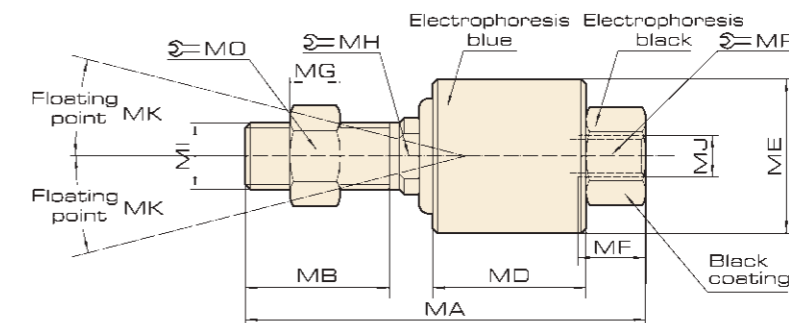
Overall Dimension



Dimension

Bore/Symbol	d	D3	d2	d5	S	B	L5	C1	h1	L3	d4	L4	a°
12 / 16	5	M5X0.8	18	12.5	10	8	4	6	27	10	9	36	13
	6	M6X1	20	13	11	9	5	6.75	30	12	10	45	13
20	8	M8X1.25	24	16	14	12	5	9	36	16	12.5	48	13
	10	M10X1.25	28	19	17	14	6.5	10.5	43	20	15	57	13
40	12	M12X1.25	32	22	19	16	6.5	12	50	22	17.5	66	13
	14	M14X1.5	36	25	22	19	8	13.5	57	25	20	75	13
50 / 63	16	M16X1.5	40	27	22	21	8	15	64	28	22	84	13
	18	M18X1.5	46	31	27	23	10	16.5	71	32	25	94	13
80 / 100	20	M20X1.5	50	34	30	25	10	18	77	33	27.5	102	13
	27	M27X2	66	46	41	35	14	26	103	41	37	136	13

FDJT Piston Floating Jiont



Dimension

Bore/Symbol	MA	MB	MD	ME	MF	MG	MH	MI	MJ	MK	MP	MO
12 / 16	35	13	13	16	8	4.5	6	M6X1	M6X1	12	10	10
20	54	21	18	24	12	6	8	M8X1.25	M8X1.25	12	14	14
25 / 32	59.5	21	22	26	10	6	8	M10X1.25	M10X1.25	12	17	17
40	64.5	21	24	32	10	7	12	M12X1.25	M12X1.25	12	19	19
50 / 63	90	27	36	45	15	8	17	M16X1.5	M16X1.5	12	27	24
80 / 100	102.5	29	40	53	20	10	22	M20X1.5	M20X1.5	10	32	30

Cylinder
Calculation
SI
SI A.
SIB
SQ
DNT
SC / SU
SCT
SC A.
SL
DN
DSN
DN/DSN A.
MA
MAC
MA/MAC A.
MAL
MALC
MAL/MAC A.
SDA
CQ2
TCQ2
ADN
TADN
PPRM
MHL2
Pneumatic Fingers
MXH/MXQ
CJP
CJ2
CDU
TN
CXS
MGP
MSQ

Cylinder
Calculation
SI
SI A.
SIB
SQ
DNT
SC / SU
SCT
SC A.
SL
DN
DSN
DN/DSN A.
MA
MAC
MA/MAC A.
MAL
MALC
MAL/MAC A.
SDA
CQ2
TCQ2
ADN
TADN
PPRM
MHL2
Pneumatic Fingers
MXH/MXQ
CJP
CJ2
CDU
TN
CXS
MGP
MSQ