

Features

1. The cylinder is in accordance with the ISO15552.
2. The piston seal adopts two NBR+PA material as Y type one-way sealing structure with compensation function, long service life and low starting pressure.
3. The rod seal uses PU material with the characteristics of high strength, good toughness, wear resistance, oil resistance and aging resistance.
4. The piston rod material is made by 45C Carbon Steel with hard chrome plating on the surface, and the roughness Ra<0.4, with good wear resistance and rust resistance.



Cylinder
Calculation

SI

SI A.

SIB

SQ

DNT

SC / SU

SCT

SC A.

SL

DN

DSN

DN/DSN A.

MA

MAC

MA/MAC A.

MAL

MALC

MAL/MALC A.

SDA

CQ2

TCQ2

ADN

TADN

PPRM

MHL2

Pneumatic Fingers

MXH/MXQ

CJP

CJ2

CDU

TN

CXS

MGP

MSQ

Ordering Code

SI	D	50	50	10	S	LB	MT
Series	Series Code	Bore	Stroke	Adjustable Stroke	Magnet	Mountings	Sensor
SI: ISO 15552 Standard cylinder	Blank: Standard double acting	32		10: 10mm	S: With magnet	Blank: Basic mountings	JEL-30R type
	D: Double-shaft double acting	40		20: 20mm	Blank: Without magnet	LB: Front and back mounting	
		50		30: 30mm		FA: Front mounting flange	* Standard wire length is 1 meter, please specify for other length
		63		50: 50mm		FB: Back mounting flange	
	J: Double-shaft with adjustable stroke	80		75: 75mm		CA: Back clevis (Single earring)	
		100		100: 100mm		CB: Back hinge (Double earring)	
		125				YB: Back hinge	

Specification

Bore (mm)	32	40	50	63	80	100	125
Operation	Double Acting						
Working Medium	Air						
Mountings	Basic FA FB CA CB LB YB						
Operating Pressure Range	1 ~ 9.0 Kgf/cm ²						
Proof Pressure	13.5 Kgf/cm ²						
Operating Temperature Range	-20 ~ 80°C						
Operating Speed Range	50 ~ 800mm/s						
Cushion	Adjustable Cushion						
Adjustable Cushion Stroke	20 mm			26 mm			
Port Size	G1/8"	G1/4"		G3/8"		G1/2"	

SI Series Standard Cylinder (Conforms to ISO15552 Standard)



Cylinder
Calculation

SI

SI A.

SIB

SQ

DNT

SC / SU

SCT

SC A.

SL

DN

DSN

DN/DSN A.

MA

MAC

MA/MAC A.

MAL

MALC

MAL/MALC A.

SDA

CQ2

TCQ2

ADN

TADN

PPRM

MHL2

Pneumatic
Fingers

MXH/MXQ

CJP

CJ2

CDU

TN

CXS

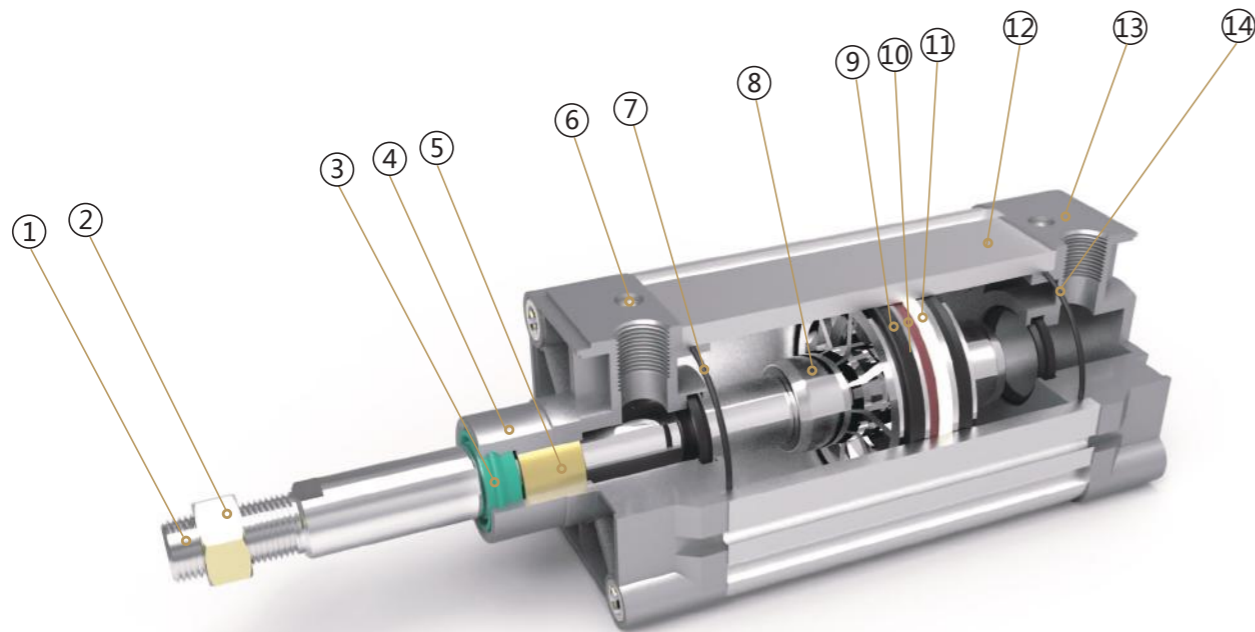
MGP

MSQ

Stroke

Bore	Standard Stroke	Max. Stroke	Allowable Stroke
32	25 50 75 80 100 125 150 160 175 200 250 300 350 400 450 500	1000	2000
40	25 50 75 80 100 125 150 160 175 200 250 300 350 400 450 500 600 700 800	1200	2000
50	25 50 75 80 100 125 150 160 175 200 250 300 350 400 450 500 600 700 800 900 1000	1200	2000
63	25 50 75 80 100 125 150 160 175 200 250 300 350 400 450 500 600 700 800 900 1000	1500	2000
80	25 50 75 80 100 125 150 160 175 200 250 300 350 400 450 500 600 700 800 900 1000	1500	2000
100	25 50 75 80 100 125 150 160 175 200 250 300 350 400 450 500 600 700 800 900 1000	1500	2000
125	25 50 75 80 100 125 150 160 175 200 250 300 350 400 450 500 600 700 800 900 1000	1500	2000

Internal Structure



Parts

Number	Name	Number	Name
1	Piston rod	8	Piston
2	Hexagon nut	9	Y ring
3	Shaft seal	10	Magnet
4	Front cover	11	Anti-friction ring
5	Copper tube	12	Barrel
6	Cushion adjust screw	13	Back cover
7	Cushion seal	14	O ring

ISO9001:2015 CE

SI Series Standard Cylinder (Conforms to ISO15552 Standard)

Cylinder
Calculation

SI

SI A.

SIB

SQ

DNT

SC / SU

SCT

SC A.

SL

DN

DSN

DN/DSN A.

MA

MAC

MA/MAC A.

MAL

MALC

MAL/MALC A.

SDA

CQ2

TCQ2

ADN

TADN

PPRM

MHL2

Pneumatic
Fingers

MXH/MXQ

CJP

CJ2

CDU

TN

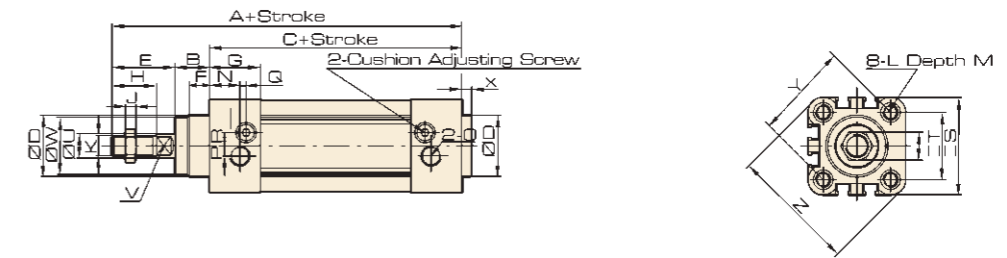
CXS

MGP

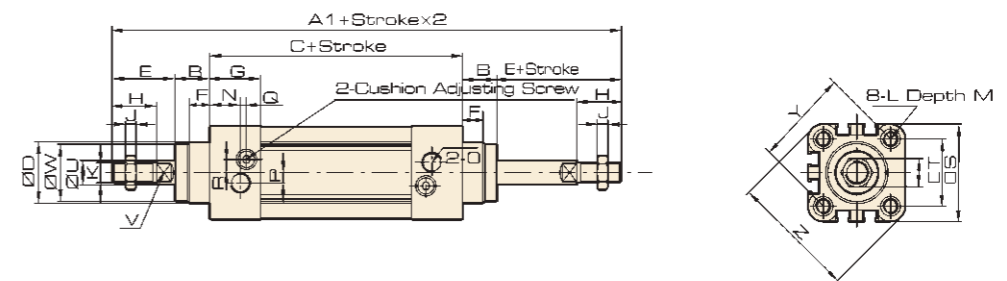
MSQ

Overall Dimension

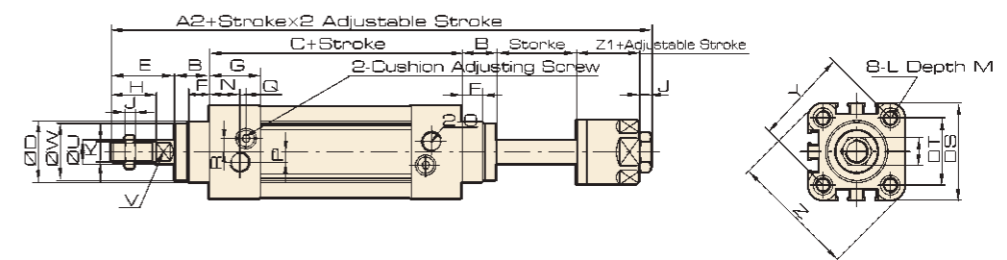
SI



SID



SIJ



Dimension

Bore/ Symbol	A	A1	A2	B	C	D	E	F	G	H	I	J	K	L
32	142	190	185	16	94	30	33	10	25	22	17	6	M10x1.25	M6
40	159	213	207	20	105	35	34	10	29.5	24	17	7	M12x1.25	M6
50	175	244	233	27	106	40	42.5	10	32	32	23	8	M16x1.5	M8
63	190	258	247	26	122	45	42	10	36	32	23	8	M16x1.5	M8
80	214	301	288	35	126	45	53	10	37	40	26	10	M20x1.5	M10
100	229	321	308	40	137	55	52	10	39	40	26	10	M20x1.5	M10
125	277	394	378	47	160	60	71	10	43	54	40	10	M27x2	M12

Bore/ Symbol	M	N	O	P	Q	R	S	T	U	V	W	X	Y	Z	Z1
32	12	15	G1/8	5	3	6.5	45	32.5	12	10	28	4	46	58.7	21
40	12	17.5	G1/4	7	3	7	52	38	16	13	33	4	53.7	68	21
50	12	20	G1/4	7	3	9	65	46.5	20	17	38	4	65.8	84.5	23
63	12	22	G3/8	8	5	9	76	56.5	20	17	38	4	79.9	99.6	23
80	15	23	G3/8	10	5	12	94	72	25	22	43.5	4	101.8	123.8	29
100	15	26	G1/2	10	5	14	112	89	25	22	47	4	125.9	148.9	29
125	20	29	G1/2	10	5	14	134	110	32	27	53	6	156.9	179.6	40.5

SI Series

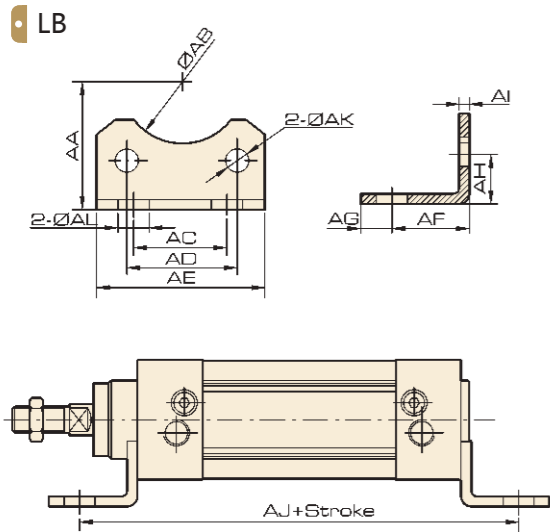
Standard Cylinder Accessory

(Conforms to ISO15552 Standard)



LB Foot

Overall Dimension

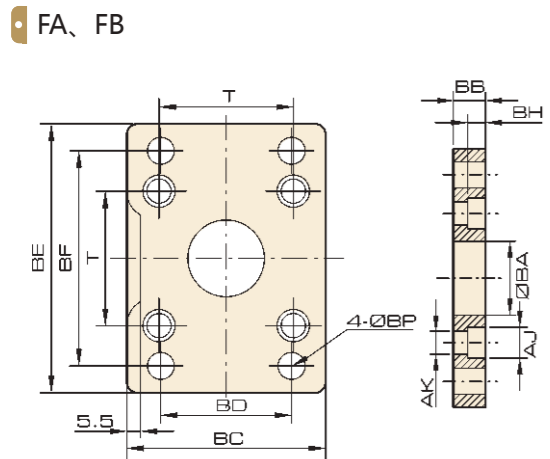


Dimension

Bore/Symbol	32	40	50	63	80	100	125
AA	32	36	45	50	63	71	90
AB	30	35	40	45	45	55	60
AC	32	36	45	50	63	75	90
AD	32.5	38	46.5	56.5	72	89	110
AE	45	52	65	75	95	115	140
AF	24	28	32	32	41	41	45
AG	11	8	15	13	14	16	18
AH	15.8	17	21.8	21.8	27	26.5	35
AI	4	4	5	5	6	6	8
AJ	142	161	170	186	208	219	250
AK	7	7	9	9	11	11	12.5
AL	7	10	10	10	12	14.5	16.5

FA / FB Flange

Overall Dimension



Bore/Symbol	32	40	50	63	80	100	125
BA	30.3	35.3	40.3	45.3	45.3	55.3	60.3
BB	10	10	12	12	16	16	20
BC	45	52	65	76	94	112	140
BD	32	36	45	50	63	75	90
BE	80	90	110	120	150	175	224
BF	64	72	90	100	126	150	180
BH	6.5	6.5	8.5	8.5	10.5	10.5	15
AJ	10.5	10.5	13.5	13.5	16.5	16.5	19
AK	6.5	6.5	8.5	8.5	10.5	10.5	12.5
BP	7	9	9	9	12	14	16
T	32.5	38	46.5	56.5	72	89	110

ISO9001:2015 CE

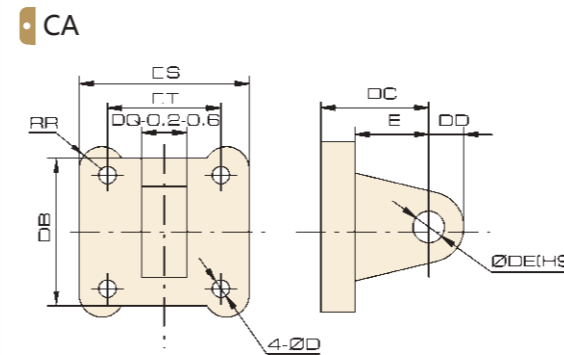
SI Series

Standard Cylinder Accessory

(Conforms to ISO15552 Standard)

CA Hinge

Overall Dimension

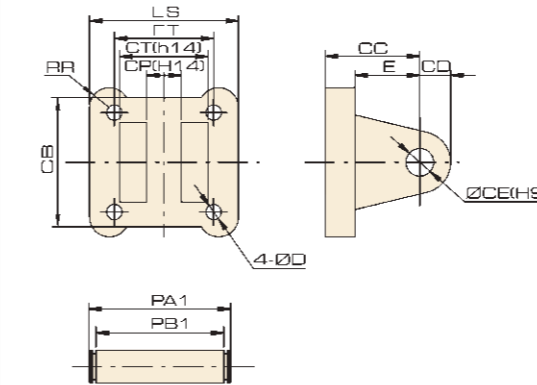


Dimension

Bore/Symbol	32	40	50	63	80	100	125
S	45	52	65	76	94	112	140
T	32.5	38	46.5	56.5	72	89	110
RR	6.5	6.5	9	9.5	11	11.5	12
DB	34	41	54	65	83	101	123
DC	22	25	27	32	36	41	50
DD	10	11	13	16	16	20	25
DE	10	12	12	16	16	20	25
DQ	26	28	32	40	50	60	70
D	6.5	6.5	8.5	8.5	10.5	10.5	12.5
E	14	17	17	22	24	25	30

CB Hinge

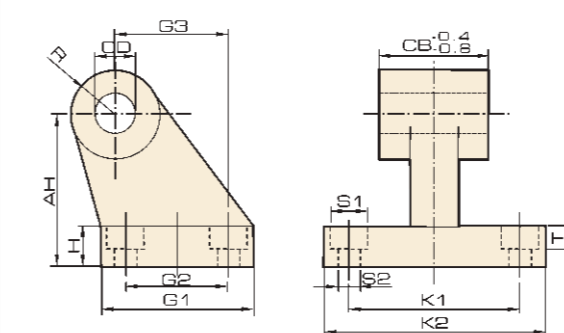
CB



Bore/Symbol	32	40	50	63	80	100	125
S	45	52	65	76	94	112	140
T	32.5	38	46.5	56.5	72	89	110
D	6.5	6.5	8.5	8.5	10.5	10.5	12.5
E	14	17	17	22	24	25	30
RR	6.5	6.5	9	9.5	11	11.5	12
CB	34	41	54	65	83	101	123
CC	22	25	27	32	36	41	50
CD	10	11	13	16	16	20	25
CE	10	12	12	16	16	20	25
CP	26	28	32	40	50	60	70
CT	45	52	60	70	90	110	120
PA1	53	60	68	78	100	120	130
PB1	46.5	53.5	61.5	71.5	91.5	111.5	121.5

YB Hinge

YB



Bore/Symbol	32	40	50	63	80	100	125
AH	32	36	45	50	63	71	90
H	8	10	12	12	14	15	20
CD	10	12	12	16	16	20	25
G1	31	35	45	50	60	70	90
G2	18	22	30	35	40	50	60
G3	21	24	33	37	47	55	70
CB	26	28	32	40	50	60	70
K1	38	41	50	52	66	76	94
K2	51	54	65	67	86	96	124
S1	11	11	14	14	17	17	20
S2	6.6	6.6	9	9	11	11	14
T	1.6	1.6	1.6	1.6	2.5	2.5	3.2
R	10	11	13	15	15	19	22.5

Cylinder
Calculation
SI
SI A.
SIB
SQ
DNT
SC / SU
SCT
SC A.
SL
DN
DSN
DN/DSN A.
MA
MAC
MA/MAC A.
MAL
MALC
MAL/MAC A.
SDA
CQ2
TCQ2
ADN
TADN
PPRM
MHL2
Pneumatic
Fingers
MXH/MXQ
CJP
CJ2
CDU
TN
CXS
MGP
MSQ

Cylinder
Calculation
SI
SI A.
SIB
SQ
DNT
SC / SU
SCT
SC A.
SL
DN
DSN
DN/DSN A.
MA
MAC
MA/MAC A.
MAL
MALC
MAL/MAC A.
SDA
CQ2
TCQ2
ADN
TADN
PPRM
MHL2
Pneumatic
Fingers
MXH/MXQ
CJP
CJ2
CDU
TN
CXS
MGP
MSQ