



## Features

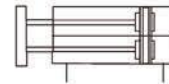
Double rod with double force for higher anti-bending and anti-twisted strength ensured durable life and perfect directional characteristic.

## Ordering Code

<b>TN</b>	<b>20</b>	<b>x</b>	<b>50</b>	<b>MT</b>
Type	Bore		Stroke	Sensor
TN: Double-shaft double acting	10 16 20 25 32			CSI-J * Standard wire length is 1 meter, please specify for other length

\* TN Series attached magnetic ring

## Symbol



## Specification

Bore (mm)	10	16	20	25	32
Working Medium	Air				
Operation	Double Acting				
Operation Pressure Range	0.1~0.9 MPa				
Ensure Pressure Resistance	1.35 MPa				
Operation Temperature Range	0~70 °C				
Operation Speed Range	100~500 mm/s				
Adjustable Stroke	-10~0 mm				
Cushion	Not Available	Cushion Gasket			
Precision Of Non-rotating	0.4°	0.3°			
Port Size	M5 x 0.8				PT 1/8"

The Max. operating pressure is subject to the Max. load of hydraulic buffer.

## Stroke

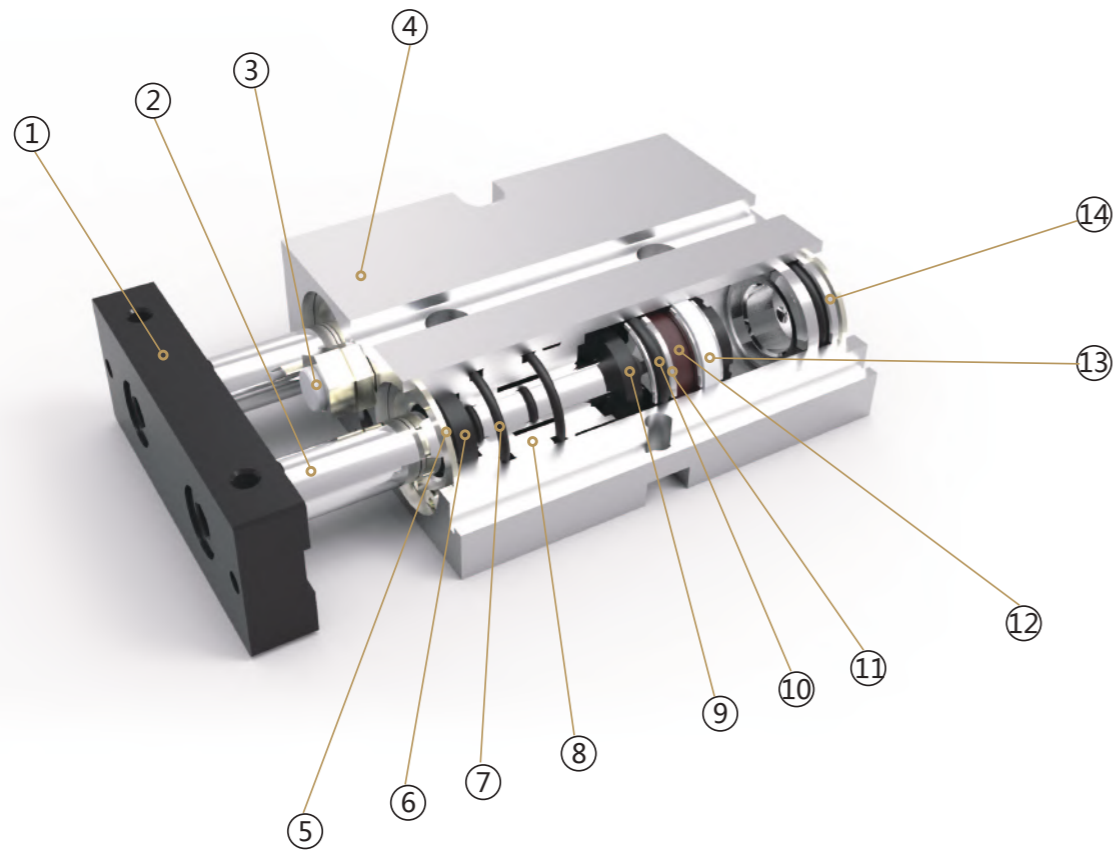
Bore (mm)	Standard Stroke												Max. Stroke	Allowable Stroke
10	10	20	30	40	50	60	70						70	100
16	10	20	30	40	50	60	70	80	90	100	125	150	150	200
20	10	20	30	40	50	60	70	80	90	100	125	150	150	200
25	10	20	30	40	50	60	70	80	90	100	125	150	150	200
32	10	20	30	40	50	60	70	80	90	100	125	150	150	200

- Cylinder
- Calculation
- SI
- SI A.
- SIB
- SQ
- DNT
- SC / SU
- SCT
- SC A.
- SL
- DN
- DSN
- DN/DSN A.
- MA
- MAC
- MA/MAC A.
- MAL
- MALC
- MAL/MAL A.
- SDA
- CQ2
- TCQ2
- ADN
- TADN
- PPRM
- MHL2
- Pneumatic  
Fingers
- MXH/MXQ
- CJP
- CJ2
- CDU
- TN**
- CXS
- MGP
- MSQ

# TN Series Double Rod Cylinder



## Internal Structure



## Parts

Number	Name	Number	Name
1	Fixing plate	8	Front cover
2	Piston rod	9	Anti-collision washer
3	Anti-collision head	10	Piston seal
4	Cylinder body	11	Piston
5	Circlips for holes	12	Magnet
6	Shaft seal	13	Anti-friction ring
7	O ring	14	Back cover

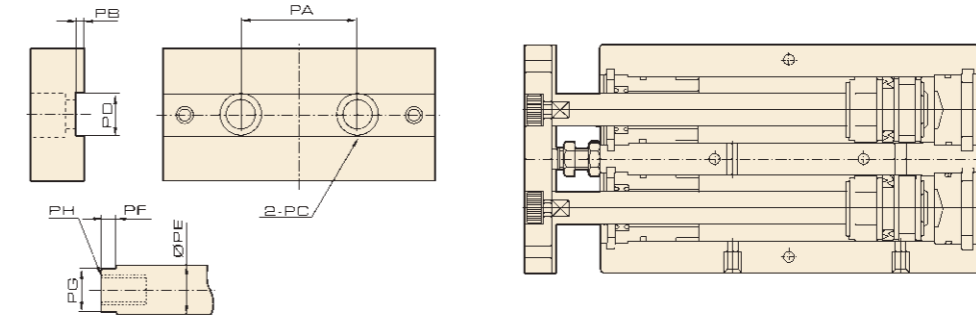
ISO9001:2015 CE

# TN Series Double Rod Cylinder

## Overall Dimension

TN

Ø16~Ø25

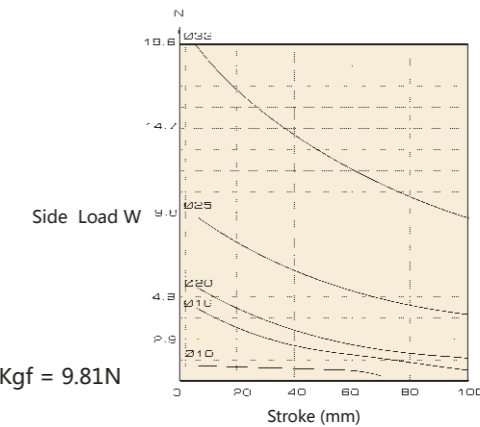
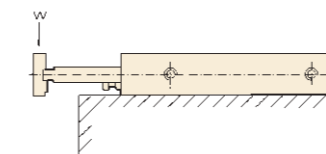


## Dimension

Bore / Symbol	PA	PB	PC	PD	PE	PF	PG	PH
10	18	0.5	Φ6.2 deep 3.5 mm, Through Hole: Φ4.5	5.2	6	3	5.2	M3 × 0.5 deep 5 mm
16	24	1	Φ7.8 deep 4.6 mm, Through Hole: Φ4.5	6.2	8	3	6.2	M4 × 0.7 deep 46 mm
20	28	1	Φ11 deep 6.8 mm, Through Hole: Φ4.5	8.2	10	3	8.2	M6 × 1 deep 48 mm
25	34	1	Φ11 deep 6.8 mm, Through Hole: Φ4.5	10.2	12	3	10.2	M6 × 1 deep 48 mm
32	42	2	Φ17 deep 12 mm, Through Hole: Φ4.5	14	16	3	14	M10 × 1.5 deep 14 mm

## Overall Dimension

Allowable size load



## Dimension

O-ring List

Inner Diameter Quantity	Front cover seal	Piston O-ring	Rear cover O-ring	Piston rod O-ring
	1	2	2	1
10	PDU-6	APA-10	10×1.5	P12
16	PDU-8	APA-16	16×1.5	P16
20	PDU-10	APA-20	20×1.5	P20
25	PDU-12	APA-25	25×1.5	P20
32	PDU-16	APA-32	32×1.5	P25

Cylinder  
Calculation  
SI  
SI A.  
SIB  
SQ  
DNT  
SC / SU  
SCT  
SC A.  
SL  
DN  
DSN  
DN/DSN A.  
MA  
MAC  
MA/MAC A.  
MAL  
MALC  
MAL/MALC A.  
SDA  
CQ2  
TCQ2  
ADN  
TADN  
PPRM  
MHL2  
Pneumatic  
Fingers  
MXH/MXQ  
CJP  
CJ2  
CDU  
TN  
CXS  
MGP  
MSQ

Cylinder  
Calculation  
SI  
SI A.  
SIB  
SQ  
DNT  
SC / SU  
SCT  
SC A.  
SL  
DN  
DSN  
DN/DSN A.  
MA  
MAC  
MA/MAC A.  
MAL  
MALC  
MAL/MALC A.  
SDA  
CQ2  
TCQ2  
ADN  
TADN  
PPRM  
MHL2  
Pneumatic  
Fingers  
MXH/MXQ  
CJP  
CJ2  
CDU  
TN  
CXS  
MGP  
MSQ

# TN Series

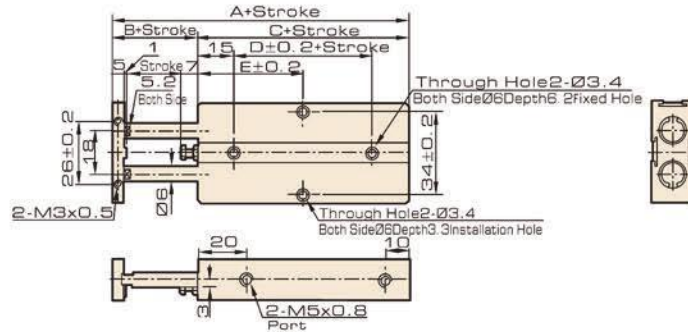
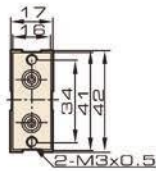
## Double Rod Cylinder



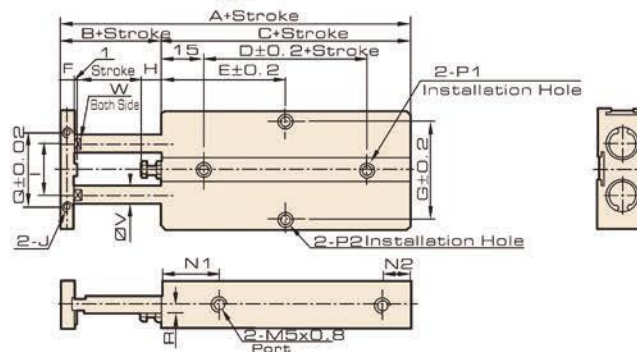
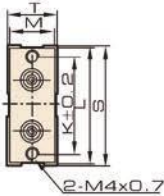
### Overall Dimension

#### TN

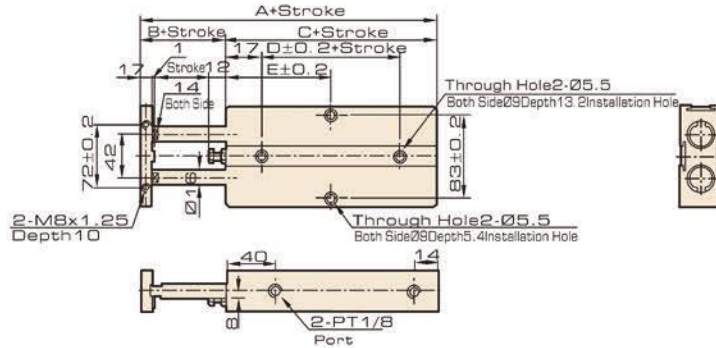
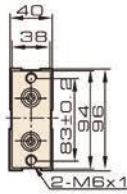
• Ø10



• Ø16~Ø25



• Ø32



### Dimension

Bore Symbol	A	B	C	D	E											F	G	H	I	
					10	20	30	40	50	60	70	80	90	100	125					150
16	68	15	53	20	30	35	40	45	50	55	60	65	70	75	87.5	100	8	47	6	24
20	78	20	58	20	35	35	40	45	50	55	60	65	70	75	87.5	100	10	55	9	28
25	81	19	62	30	40	40	45	50	55	60	65	70	75	80	92.5	105	10	66	8	34

Bore Symbol	J	K	L	M	N1	N2	P1						P2						Q	R	S	T	V	W
							Double side: Ø7.5 Deep: 7.2mm, Through Hole: Ø4.5						Double side: Ø8 Deep: 4.4mm, Through Hole: Ø4.5											
16	M4x0.7 deep 5	47	53	20	22	10	Double side: Ø7.5 Deep: 7.2mm, Through Hole: Ø4.5						Double side: Ø8 Deep: 4.4mm, Through Hole: Ø4.5						34	3	54	21	8	6.2
20	M4x0.7 deep 5	55	61	24	25	12	Double side: Ø7.5 Deep: 7.2mm, Through Hole: Ø4.5						Double side: Ø8 Deep: 4.4mm, Through Hole: Ø4.5						44	3.5	62	25	10	8.1
25	M4x0.8 deep 6	66	72	27	30	12	Double side: Ø7.5 Deep: 7.2mm, Through Hole: Ø4.5						Double side: Ø8 Deep: 4.4mm, Through Hole: Ø4.5						56	7	73	30	12	10.2

Bore Symbol	A	B	C	D	E											
					10	20	30	40	50	60	70					
10	63	12	51	10	30	30	35	40	45	50	55					
32	108	30	78	35	10	20	30	40	50	60	70	80	90	100	125	150
					45	50	55	60	65	70	75	80	85	90	102.5	115