

X-FE Series

Air Filter Combination (2 Combination)



- FRL
- AC, BC
- AFC, BFC
- AF, BF
- AR, BR
- AFR, BFR
- AL, BL
- JAC
- JAF
- JAR
- JAW
- JAL
- JC
- X-FE**
- FE
- GC
- ZYR10
- PTH
- JAD
- DPS



X-FRC



X-LFR

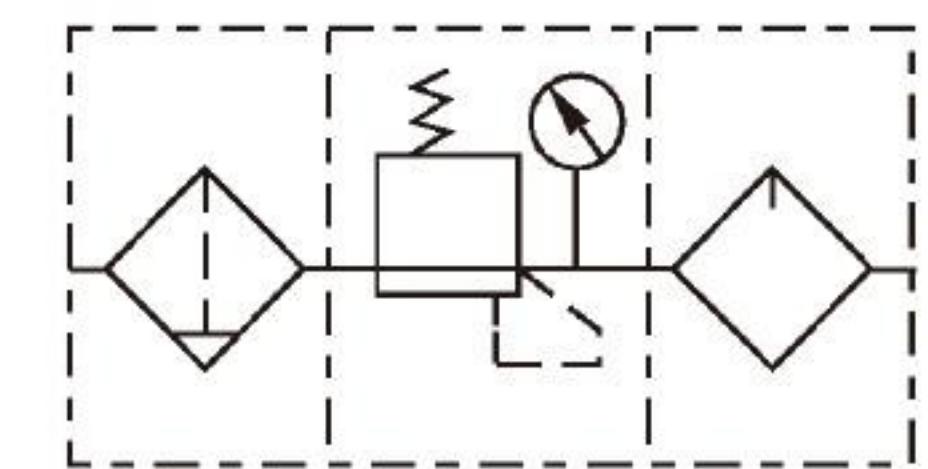


X-LR

Ordering Code

X-FRC	3/4	7	5M	O	MAXI	A
Standard	Port Size	Pressure Range	Filter Range	Gauge	Size	Drain Type
X-FRC: 2 Combination	G1/8	Blank: 0.5 ... 12 bar	Blank: 40 μm	Blank: With Gauge	MINI: Mini	Blank: Hand
X-LFR: Filter regulator	G1/4	7: 0.5 ... 7 bar	5M: 5 μm	O: Without Gauge	MIDI: Mid	H: Semi Automatic
X-LR: Regulator	G3/8				MAXI: Max	A: Automatic
X-LF: Filter	G1/2					
X-LOE: Lubricator	G3/4					
	G1					

Symbol



Specification

Specification	Mini			Midi			Maxi	
Port Size	G1/8	G1/4	G3/8	G3/8	G1/2	G3/4	G3/4	G1
Working Medium	Compressed Air							
Structure Features	Filter regulator, with/without gauge proportional Lubricator							
Install Way	By Accessories Tube							
Install Position	Vertical $\pm 5^\circ$							
Regulator Lock	Rotary handle, with lock Rotary handle, with itergrated locks							
Filter Class	[μm]	5 or 40						
Max Hysteresis	[bar]	0.2					0.4	
Preessure Range	[bar]	0.5 ... 7			0.5 ... 12			
Preessure Display		By Gauge						
		G1/8 Preset		G1/4 Preset		G1/4 Preset		
Water Capacity	[cm^3]	22		43		80		
Input Pressure	[bar]							
Water	Hand	1 ... 16						
Exhaust	Semi Automatic	1.5 ... 16						
	Automatic	2 ... 12						